

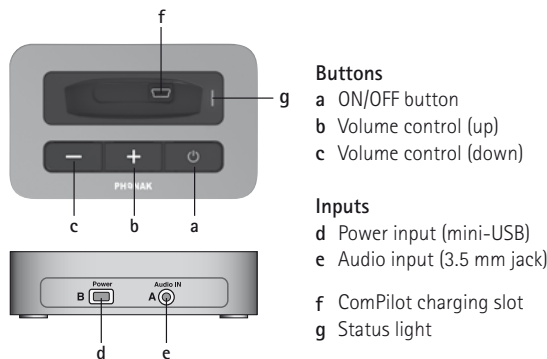
# Phonak TVLink S basestation

## Technical Data

The TVLink S basestation is a dedicated TV solution that offers a great listening experience. The low latency transmission from TV to hearing instruments and StereoSound provide excellent sound quality. True plug and play and one-step set-up make it ready to go in less than 60 seconds. The Phonak TVLink S basestation used with ComPilot turns any wireless Phonak hearing instrument into a lightweight wireless headset.



### Description



#### Buttons

- a ON/OFF button
- b Volume control (up)
- c Volume control (down)

#### Inputs

- d Power input (mini-USB)
- e Audio input (3.5 mm jack)
- f ComPilot charging slot
- g Status light

### Special features

- Compatible with Phonak ComPilot
- Test sound generation option
- Missing audio input visualization
- Easy and quick installation
- Complete set with power plug and cables
- No line of sight to hearing aids necessary
- Up to 30 meters (100 ft) transmission range
- Digital volume adjustment with audio-visual feedback
- Embedded charging slot for ComPilot

### General information

|                                   |   |
|-----------------------------------|---|
| Dimensions:                       | L x W x H: 90 x 60 x 23 mm<br>(3.8 x 2.5 x 1 inches)  |
| Weight:                           | 100 g   |
| Color:                            | Light silver metallic   |
| Operating conditions:             | The product has been designed for trouble-free operation without restrictions when used as intended, unless otherwise stated in the user guide<br>-10°/55° Celsius and relative humidity of <95% (non condensing) |
| Transport and storage conditions: | -20°/60° Celsius and relative humidity of 90% for a long period of time   |

### Status light indication

- Power ON with audio input
- - - Power ON, no audio input
- Transmitting to ComPilot
- - - Paused transmission
- Bluetooth pairing

Manual Bluetooth pairing:  
- Press ON/OFF button for 5 seconds

Delete Bluetooth pairing table:  
- Press ON/OFF button for 10 seconds



# Technical Data

Phonak TVLink S basestation

## Power supply

|                          |  |
|--------------------------|--|
| Type:                    | DC, stabilized   |
| Secondary voltage:       | 5 VDC  |
| Max. current:            | 500 mA   |
| Plug:                    | Mini-USB   |
| <b>Important notice:</b> | Only use the original Phonak power plug or an USB certified power adaptor > 500 mA |

## Audio information

|                |                        |
|----------------|------------------------|
| Audio input:   | Wired (3.5 mm socket)  |
| Audio quality: | Stereo, 20 Hz – 22 kHz |

## Based on Bluetooth® technology

|   |   |
|---|---|
| Bluetooth profile:                        |   |
| A2DP, Advanced Audio Distribution Profile | <ul style="list-style-type: none"><li>Optimized for use with Phonak ComPilot</li><li>Compliance to non-Phonak devices is not guaranteed</li></ul> |
| Frequency range:                          | 2402.0 to 2480.0 MHz  |
| RF power:                                 | 100 mW max.   |
| Bluetooth range:                          | Up to 30 m (100 ft)   |
| Bluetooth compliance:                     | Bluetooth version 2.1, Class 1  |
| Maximum paired devices:                   | 4   |
| QDID:                                     | B018562   |

## Standards

### Europe

|             |            |
|-------------|------------|
| Radio:      | EN 300 328 |
| EMC:        | EN 301.489 |
| El. Safety: | EN 60950-1 |

|     |                 |
|-----|-----------------|
| USA | CFR 47, part 15 |
|-----|-----------------|

|        |                 |
|--------|-----------------|
| Canada | RSS-210 Issue 8 |
|--------|-----------------|



The Bluetooth® word mark and logos are registered trademarks owned by Bluetooth SIG, Inc. and any use of such marks by Phonak is under license. Other trademarks and trade names are those of their respective owners.



This device is a class 2 device and can be operated in the EU member states without restrictions for indoor use, but must not operated outdoors in France.

## Accessories

- Audio cable 3.5 mm plug
- Audio cable RCA/Cinch
- SCART adaptor (optional)
- Power plug: country specific
- User guide
- Quick setup guide

## Compatibility note:

Make sure the following combination is used:



|                         |                             |                                 |
|-------------------------|-----------------------------|---------------------------------|
| <b>Streamer:</b>        | ComPilot                    | iCom                            |
| <b>Charging slot:</b>   | TVLink S                    | TVLink                          |
| <b>Characteristics:</b> | Round shape<br>Silver color | Rectangle shape<br>Bronze color |