

# Phonak

# Target 7.1

## Verification Fitting Guide

This guide summarizes the steps for using Verification assistant within Phonak Target as there are a variety of variables such as compression, frequency lowering and noise management that can impact verification of gain and MPO settings.

**For additional details on programming and fitting Phonak hearing aids, please refer to the Phonak Target Fitting Guide.**

### Content

Preparation.....	2
Connecting the hearing aids .....	2
RECD .....	2
Fitting formula .....	3
Verification assistant.....	4
Finishing the fitting session .....	5
Information and description of symbols and system requirements.....	5

## Preparation

Enter **[Client & sessions]** and client information if not already available. To prepare the hearing aids for verification, connect the hearing aids using your preferred fitting device.

**Note:** Verification assistant is only accessible when hearing aids are connected

## Connecting the hearing aids

Select how you wish to program the hearing aids **[HI-PRO]** / **[NOAHlink]** / **[iCube II]** / **[Noahlink Wireless]** via the drop down menu located centrally at the top of the main screen.

Ensure the hearing aids have fresh batteries or are fully charged when using a wireless fitting device. Click **[Connect]** to establish the connection to the hearing aids.

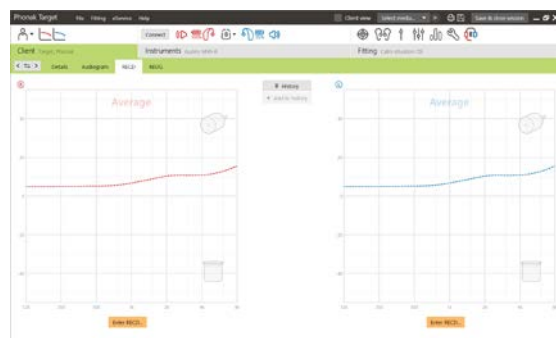


Once hearing aids are connected, the **[Acoustic parameters]** screen will automatically pop up. Please verify or change the coupling options as needed so they correspond to the fitting.

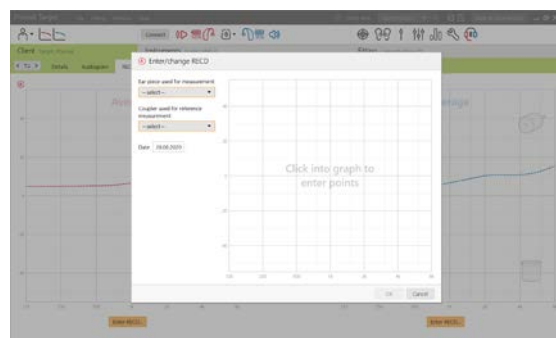
## RECD

RECD values can be accessed via **[Client]** then **[RECD]**. Different RECD values can be used in Phonak Target.

Average RECD is the foam tip RECD values based upon the HA-1 coupler, age of the individual and the fitting formula used (i.e. DSLv5 or NAL-NL2).

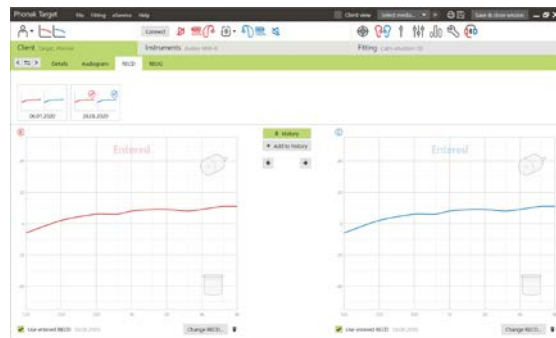


The measured RECD from verification equipment can be entered into Target by clicking on **[Enter RECD]**. Select the earpiece used (earmold or foam tip), coupler (HA-1 or HA-2) and the RECD adapter type.



To import an existing RECD from NOAH, click on **[+ Add to history]**. To view the available RECDs, click on **[History]** and select the RECD to be applied to the fitting. If the RECD information is incomplete, Target will prompt you to enter any missing earpiece, coupler or RECD adapter information.

The estimated RECD is based upon the characteristics on an adult ear and the results of the feedback test. Click on **[Use test result to predict vent]** in the feedback tab to apply this RECD to the fitting.



## Fitting formula

When fitting a child, Junior mode will automatically select the default fitting formula based upon the age of the child.

In the screen **[Global tuning]**, the desired fitting formula can be selected.

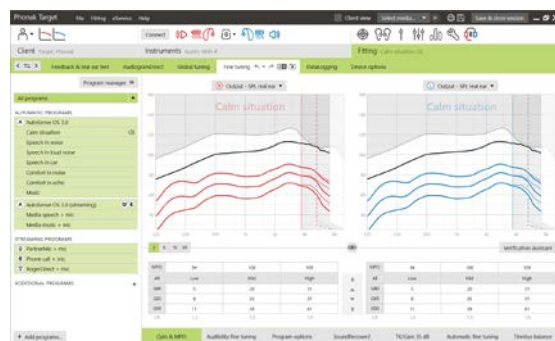
Global tuning can be accessed via **[Fitting] > [Global tuning]**.



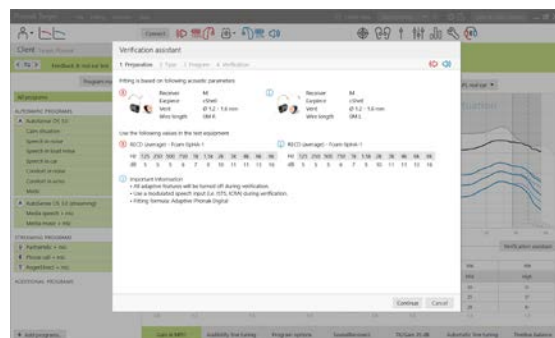
## Verification assistant

Verification assistant can be accessed via [Fine tuning] > [Gain & MPO] > [Verification assistant].

The assistant will then guide you through a series of steps.



Step 1 [Preparation]: This step starts with confirming the acoustic parameters and coupling being applied to the fitting.



Step 2 [Type]: Select whether Test box or REM verification will be performed. For REM, there are some helpful hints listed.

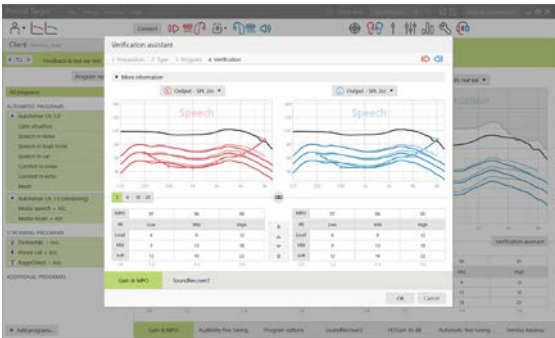
**Note:** For Test box verification, confirm that the RECD values match your verification equipment.



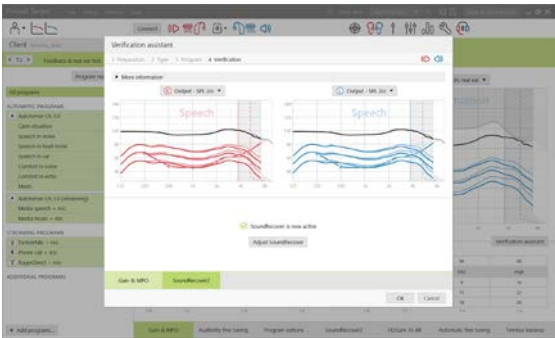
Step 3 [Program]: Choose the program that will be active during verification and indicate whether the adjustments will be applied to the active program or to all programs.



Step 4 **[Verification]**: This step will deactivate all adaptive features of the hearing aids and allow for adjustment of gain and MPO. The available curve displays correlate with the type of verification being performed. Test box will show either a 2cc output or 2cc Gain curves while real ear will show insertion gain or real ear SPL output curves.



To enable SoundRecover go to the **[SoundRecover]** on the lower part of the window. To change the settings click, on **[Adjust SoundRecover]**. All adjustments will be applied to current session.



When a hearing aid is muted or unmuted, a watermark can be seen above the curve display (i.e. Muted or Speech). The speech watermark serves as a reminder of the recommended input signal to optimize target matching.

Click **[Apply]** to confirm any adjustments made and return to the standard fitting mode. SoundRecover will be reactivated at default. If there is a need to discard any adjustments made during verification, click **[Cancel]**.

### Finishing the fitting session

You can close the session at any time by clicking **[Save & close session]** in the top right corner of the screen. The save dialog will confirm the successful save of the hearing aids. After the save, Phonak Target will guide you to the start screen.

### Information and description of symbols and system requirements

Information and the description of symbols and an overview of system requirements can be found in the Phonak Target Fitting Guide.

CE mark applied 2021



**Manufacturer:**  
Sonova AG  
Laubisrütistrasse 28  
CH-8712 Stäfa

