

Phonak

Target 7.0

Phonak Target Fitting Guide



The Phonak Target fitting software is intended to be used by qualified hearing care professionals to configure, program, and fit hearing aids to client-specific requirements. This guide provides a detailed introduction to hearing aid fitting with Phonak Target. In addition, you can find [\[News\]](#) in the Phonak Target start screen.

For the following features in Phonak Target, specific fitting guides are available (*in selected countries):

- Junior mode
- Phonak Remote Support*
- Phonak Target/ALPS*
- TargetMatch
- Tinnitus balance
- Verification

Content

Structure and navigation	2
Preparation of the hearing aids and CROS	2
Preparation of Phonak Trial™ hearing aids	3
Connect the hearing aids	3
Receiver check	4
Check the acoustic parameters	4
Accessories	4
Fitting	5
Global tuning	5
Fine tuning	6
TK/Gain 35 dB	9
Bimodal fitting considerations	10
Information and description of symbols	12
System requirements	13

Structure and navigation

The three tabs [Client], [Instruments] and [Fitting], as well as the dashboard above offer you easy navigation and status information.

The dashboard shows the fitting status and also offers shortcuts.

Client Target, Phonak	Instruments Audéo M30-312	Fitting Calm situation <J>
All client information, such as personal data and audiogram, are found in this tab.	All hearing aids, acoustic parameters, remote controls and other accessories are found here. Note: Hover over hearing aid icon to get more information about battery state of charge (rechargeable only) and Roger™ license (RogerDirect™ only).	All device adjustments are done here.

Preparation of the hearing aids and CROS

iCube II / Noahlink Wireless

No cables to the hearing aids are needed. Just insert the battery and turn on the hearing aid by closing the battery compartment. For rechargeable, turn on the hearing aid.

Note: For the fitting of CROS II or CROS B, use iCube II for faster fine tuning and instant demonstration of the CROS system.

CROS II can only be fit with Venture hearing aids.

CROS B can be fit with Belong hearing aids (except rechargeable).

CROS B-R can only be fit with Phonak Audéo B-R hearing aids.

NOAHlink or HI-PRO

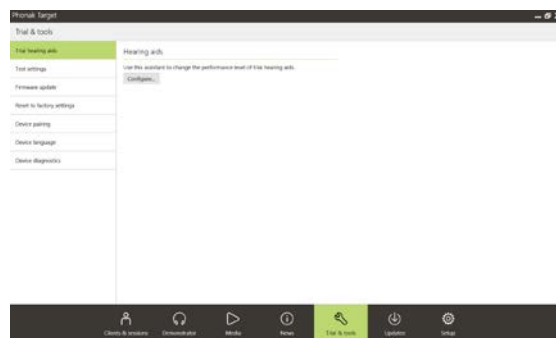
Connect the programming cables to the hearing aids and the fitting device.

For CROS fittings, it is not possible to demonstrate CROS functions with cables connected.

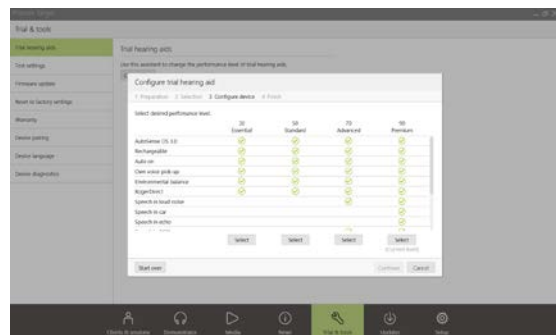
Preparation of Phonak Trial™ hearing aids

Phonak trial hearing aids offer the ability to change performance levels in one device. Click [\[Trial & tools\]](#), select [\[Trial hearing aids\]](#) and then [\[Configure\]](#) to start.

Note: Phonak Trial hearing aids are not available in Phonak Virto form factors.



Select the desired performance level and press [\[Continue\]](#). Once the process is complete, the devices are ready to be fit in a fitting session.



Connect the hearing aids

Open the fitting session and confirm that the correct fitting device is shown. To change the fitting device, use the pull down arrow next to the fitting device in the dashboard.



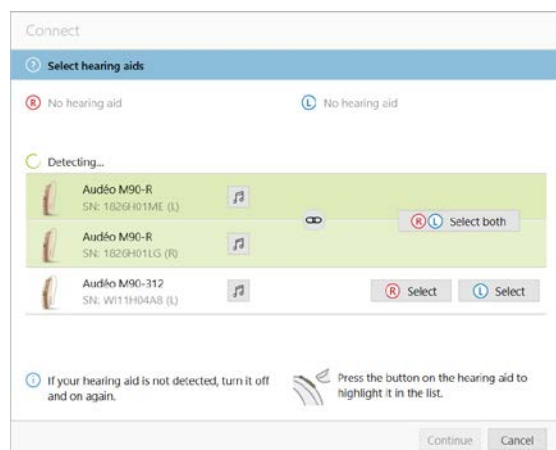
Click [\[Connect\]](#) to start the fitting. The connected hearing aids will appear in the dashboard.

For direct connectivity devices, devices available for pairing will automatically appear.

Note:

- If a device is not found, open/close the battery door or turn off/on rechargeable hearing aids to set into pairing mode.
- Press the push button or multi-function button on the hearing aid to highlight it in the list when multiple devices are available or to confirm the side to assign to a client.
- Devices fit previously together are detected as a linked pair.

For all new fittings, a suggested client experience level based upon available fitting session information, will be offered.



The audiogram data from NOAH will be automatically imported into Phonak Target and taken into account for the pre-calculation. In a standalone version of Phonak Target, enter the audiogram in the [\[Audiogram\]](#) tab.

Receiver check

Phonak Target checks when devices are first connected whether the attached receiver on a RIC hearing aid matches what is selected in the [\[Acoustic parameters\]](#) screen.

If there is a mismatch, Phonak Target will notify and prompt you to check the receiver. You can then swap out the receiver or change the acoustic parameter selection.

To initiate a re-check of the receiver, click [\[Check\]](#) in the [\[Acoustic parameters\]](#) screen.

Note: Only applicable for RIC hearing aids on the Belong, Marvel or Paradise platform.

Check the acoustic parameters

Phonak Target automatically links acoustic parameters together when they are the same. You can view, change or unlink the acoustic parameters at any time.

Click on the tab [\[Instruments\]](#) > [\[Acoustic parameters\]](#). Enter or confirm the correct coupling information.

If available, enter the coupling code. This code is printed on the client's Phonak custom earpiece. The coupling code will automatically populate with the client's individual acoustic parameters.

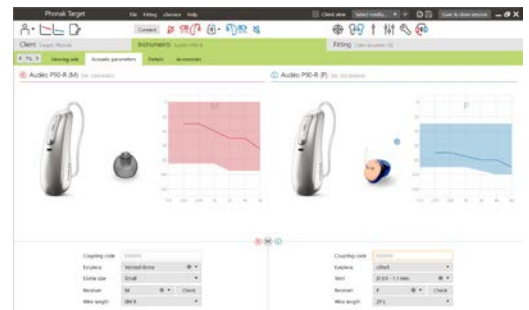
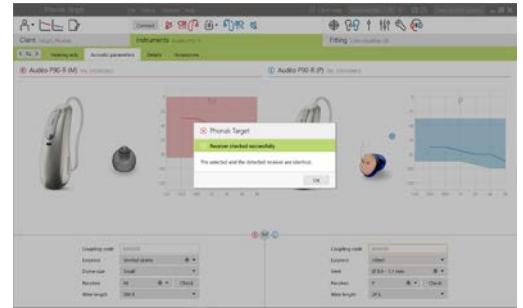
Accessories

Depending on the connected hearing aids, Phonak Target can automatically identify connected accessories during the fitting session. The compatible accessories are shown in the dashboard next to the connected hearing aids.

Accessories can also be manually selected in the tab [\[Instruments\]](#) > [\[Accessories\]](#).

During the save procedure, the accessories are listed in the save dialog.

Note: When streaming from accessories, CROS will automatically disconnect. CROS will automatically reconnect when streaming is stopped.



Fitting

Click on **[Fitting]** to access **[Feedback & real ear test]**.

The feedback test can be run in both ears, or one ear at a time. Click **[R]** / **[Start both]** / **[L]** to start the test.

Note: The feedback test cannot be performed during a Phonak Remote Support session.

To use the test results to calculate the predicted RECD and the acoustic parameter settings, select the checkbox **[Use test result to predict vent]**. The checkbox will be available only if the system can do the vent estimation.

Note: In Phonak Paradise hearing aids, overtuning the feedback threshold is available to further increase the gain limit. To overtune, click on the arrows. With further increases to the gain limit, a purple shading appears to indicate increased gain limit. When a red shading appears, it indicates area of greater feedback and distortion.

AudiogramDirect

AudiogramDirect is an in-situ hearing test within Phonak Target. It does not replace diagnostic audiological assessments. Confirm the **[Feedback & real ear test]** has been run prior to using AudiogramDirect.

Click **[AudiogramDirect]** > **[Start]** to test air conduction (AC) hearing thresholds and uncomfortable loudness levels (UCLs) using the connected hearing aids. UCL measurements are disabled during a Phonak Remote Support session.

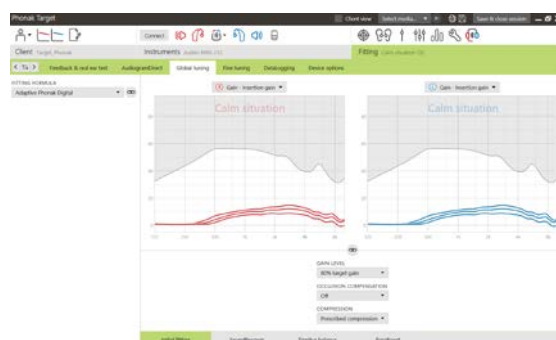
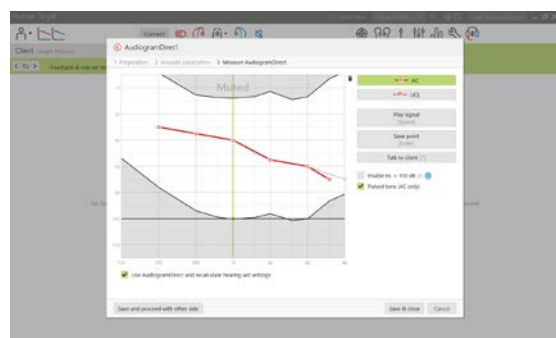
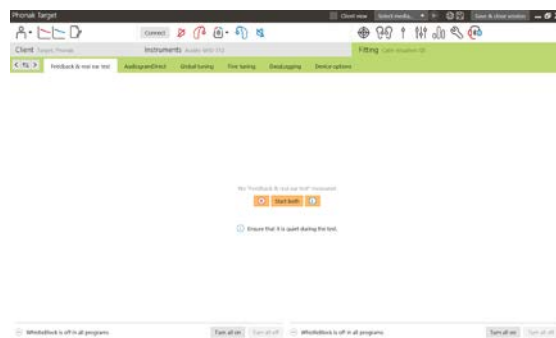
Previous hearing tests can be compared and reviewed by clicking on **[History]**.

To change the default AC and UCL measurement behavior, go to **[Startup]** > **[Fitting session]** > **[AudiogramDirect]**.

Global tuning

Go to **[Global tuning]** > **[Initial fitting]** if adjustments to the gain level, occlusion compensation, or compression are required. The gain level and compression settings are based on the client's usage experience and the selected fitting formula.

Depending on the connected hearing aids, additional tools such as **[Tinnitus Balance]** and **[CROS Balance]** can be accessed via the tab in the lower part of the screen. To adjust the loudness ratio between the CROS device and the hearing aid, click on **[CROS Balance]**.



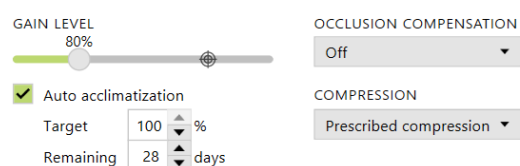
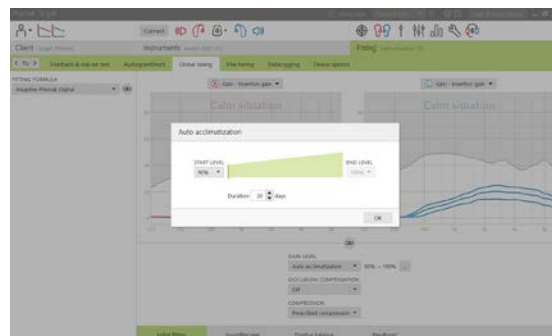
Auto acclimatization

Confirm the **[Feedback & real ear test]** has been run before using auto acclimatization.

Select **[Auto acclimatization]** in the gain level menu in the **[Initial fitting]** tab.

Click on **[...]** to specify the start level, the end level and the duration in which the gain of the hearing aid automatically increases to the set end level.

Note: For Phonak Paradise hearing aids, it is not necessary to run the **[Feedback & real ear test]** to activate auto acclimatization. To activate auto acclimatization, tick the checkbox. Specify a target gain and the remaining days the client would need to reach the target gain.

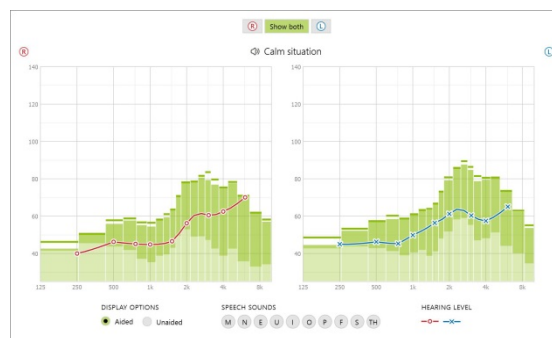


Real Time Display

In the menu bar at the top of the screen, click on the **[Client view]** checkbox to access the Real Time Display.

The Real Time Display is available for all hearing aids as a fitting curve display option, in a client-friendly enlarged view or on a second screen.

Speech intelligibility improvements, gain, output, SoundRecover and channel resolution can be easily demonstrated, especially with the provided stereo or surround sound samples.



Fine tuning

The left side of the **[Fine tuning]** screen is used for the handling of the programs.

Click **[All programs]** to adjust all programs simultaneously. Click **[AutoSense OS]** to modify all acoustic automatic programs or **[AutoSense OS (streaming)]** to modify AutoSense OS for streaming.

To modify a single program, click on the program, e.g. **[Calm situation]**, in the list and adjust as needed.

Click on the **[+]** icon to add an additional manual program.

You can manage the programs by clicking **[Program manager]** above the programs. The startup program, program structure, and streaming programs can be customized here. The undo/redo function is located in the menu bar at the top of the screen and can be used to undo or redo steps in the fine tuning screen.



The tabs in the lower part of the screen will offer access to the fitting tools. Each tool has specific modifiers to fine tune the hearing aid.

Gain & MPO

Select gain values with the cursor to adjust them. The gain values are adjustable for soft, moderate and loud input sounds. The optimum fitting range is available if the individual UCL values were entered into the client's audiogram.

To modify the MPO simultaneously in all channels, click **[MPO]** shown on the left beside the MPO values. The overall gain can be changed by clicking **[Gain]**.

The compression ratio of each channel is shown in the row directly underneath the gain values.

Audibility fine tuning

Selectable sound samples and the related gain are shown in the curve display. The sound samples can be played to simulate a specific listening environment.

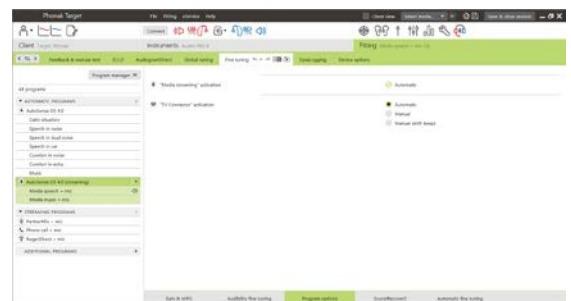
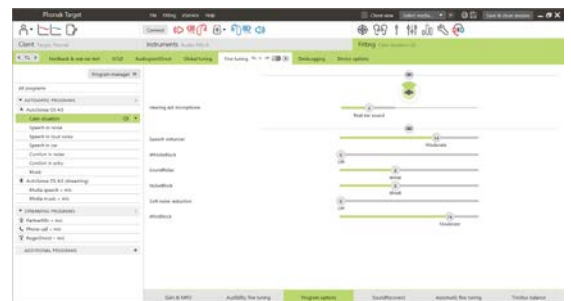
The gain values are displayed for soft, moderate and loud input sounds. Adjustments affect only gain levels and frequencies which are relevant to enhance the audibility of the selected stimuli, indicated by the different shades of red/right and blue/left.

Program options

Program options can be adjusted from the default settings. The features can be activated, deactivated, or changed in strength for each program individually. The available ranges within each scale are visible and depend upon performance level.

For direct connectivity hearing aids, the default switching behavior to access streaming can be modified (i.e. TV Connector, Roger™, Phonak PartnerMic™):

- **[Automatic]** - the hearing aids will automatically switch and receive a streamed signal (default).
- **[Manual]** - no beep is heard and the program is added as the last program.
- **[Manual (with beep)]** - a beep is heard in the hearing aids and the client manually accepts to receive a streamed signal.



SoundRecover2

The individual settings for SoundRecover2 are initially set by the pre-calculation and can be fine-tuned. For binaural fittings, the cut-off frequency and the frequency compression ratio are calculated based on the better ear. The following steps are intended for adult fittings. For pediatric fittings, please see the separate Junior mode fitting guide, as well as the Best practice protocol: Pediatric verification or SoundRecover2.

SoundRecover2 is a frequency compression system with adaptive behavior. It is defined by two cut-off frequencies, CT1 and CT2.

SoundRecover2 is:

- On by default for flat or sloping hearing losses where the 8 kHz threshold is 45 dB HL or poorer.
- Off by default for reverse sloping losses (8 kHz \geq 30 dB better than 3 kHz).

When on by default, SoundRecover2 is enabled in all programs. It can be disabled by clicking **[Enable SoundRecover2]** checkbox.

SoundRecover2 settings can be viewed in the curve display. The shaded area gives information for which frequency range it is active in.

- The first solid line is cut off frequency 1 (CT1)
- The dotted line is cut off frequency 2 (CT2)
- The third line is the maximum output frequency

Adaptive compression is applied to frequencies in the shaded area between CT1 and CT2. This frequency region is only compressed if the input is dominated by high frequency energy.

Frequencies in the shaded area between CT2 and the maximum output frequency are always compressed. Frequencies below CT1 are always uncompressed. There is no output at frequencies above the maximum output frequency.

To fine tune SoundRecover2, click on **[Fine tuning] > [SoundRecover2]**. Changing any slider will influence the cut off frequencies, compression ratio and the maximum output frequency.

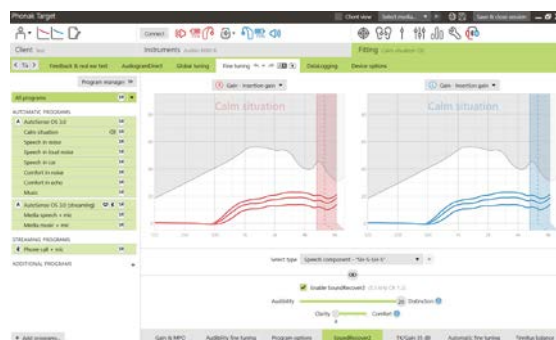
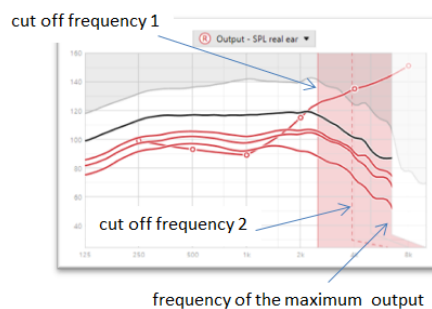
Slide toward **[Audibility]** to increase the ability to detect an /s/ and /sh/.

Slide toward **[Distinction]** to increase the ability to distinguish the difference between /s/ and /sh/.

Slide toward **[Comfort]** to increase the naturalness of sounds, such as male voices, own voice, or music.

Note: When fine tuning, it is recommended to adjust the **[Audibility/Distinction]** slider first. The **[Clarity/Comfort]** slider will reset each time the **[Audibility/Distinction]** slider is adjusted in order to optimize sound quality for low and mid frequency sounds.

Enable SoundRecover2 (3.7 kHz CR 1.1)



Verification:

The following verification practices are recommended for adults and ranked from good practice to best practice:

1. **Good:** Live voice /sh/ or /s/ or "Mississippi" to check detection. A word like "moon", or "name" to check vowels.
2. **Better:** Test box verification
3. **Best:** Phoneme Perception Test – especially when fine tuning is needed for adults with severe to profound hearing loss. (For further information refer to User Guide for the Phoneme Perception Test.)

TK/Gain 35 dB

The amplification of very soft (G35) input sounds can be adjusted. An increase of gain for very soft input sounds lowers the threshold knee point (TK) and vice versa.

Select the values with the cursor to adjust them. Underneath the gain values the TK values are shown for each channel. The gain/output curve for very soft input sounds is shown in the curve display.

Note: This tab is not available for Phonak Paradise hearing aids. To adjust soft input sounds, use the soft noise reduction slider in [\[Program options\]](#).



Automatic fine tuning

This is a situation-based fine tuning tool. The available adjustments are dependent on the client's evaluation of the sound situation.

The fine tuning steps are clearly displayed before the action will be applied. Depending on the selected program, a recommended sound sample is pre-selected.

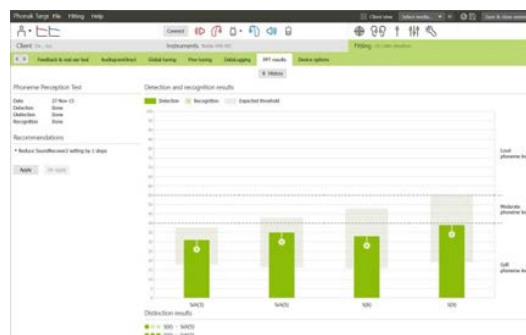
The sound samples can be played to simulate the listening environment.



Phoneme Perception Test results

Results of a previous Phoneme Perception Test can be shown and applied to improve the fitting. The screen [\[PPT results\]](#) is only accessible, if compatible test results are available in the NOAH session list.

Note: Fine tuning recommendations will be provided only if the fitting formula Adaptive Phonak Digital is used.



Datalogging

Datalogging can provide information about the listening environments the user has been in and for how long. To access Datalogging information, go to [\[Fitting\]](#) > [\[DataLogging\]](#).

Device options

By clicking **[Device options]** you can configure hearing aid options such as manual controls, signals & alerts, startup behavior or datalogging.

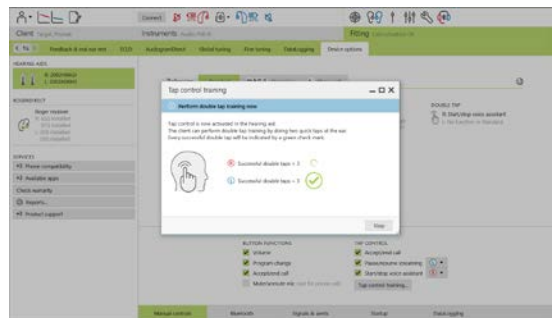
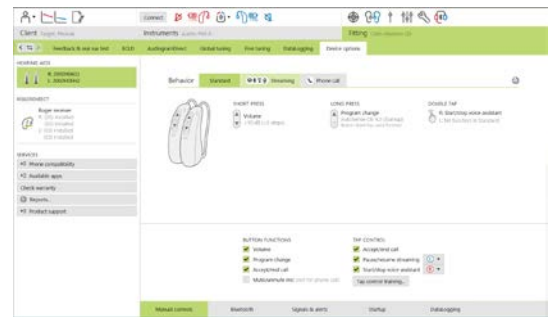
When the hearing aid is connected, each configuration can be demonstrated on the hearing aid in **[Signals & alerts]**.

Direct connectivity devices only:

- Additional settings such as configuring the Bluetooth name, side and managing pairings can be found by clicking on **[Bluetooth]**.
- If RogerDirect™ is installed, the status of installation can be viewed by clicking **[RogerDirect]** on the left side of the screen. The status can also be viewed by hovering over the hearing aid icon in the dashboard.

Phonak Paradise hearing aids only:

- Tap control can be configured in **[Manual controls]**. Tap control can be used to accept/end phone call, pause/resume streaming, and start/stop voice assistant.
- Click **[Tap control training]** to demonstrate the double tap gesture.



Bimodal fitting considerations

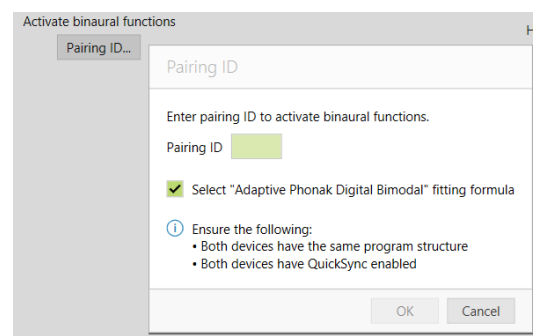
The Phonak Naída Q Link hearing aid is suited for being fit and worn contralateral to an Advanced Bionics (AB) cochlear implant (CI) sound processor. The Naída Q Link enables certain binaural functions with the CI, including volume control, program structure, and streaming.

Following connection of the hearing aid to the client's fitting session, enter the pairing ID into Phonak Target to unlock the bimodal capability in the Naída Q Link. The pairing ID is generated in the AB CI fitting software, SoundWave™. It is provided in the Bimodal Fitting Report.

Click on **[Pairing ID]** and enter client specific pairing ID. The Adaptive Phonak Digital Bimodal fitting formula is applied to the fitting session. To change the fitting formula, uncheck the box or change in **[Global tuning]** under **[Fitting]**.

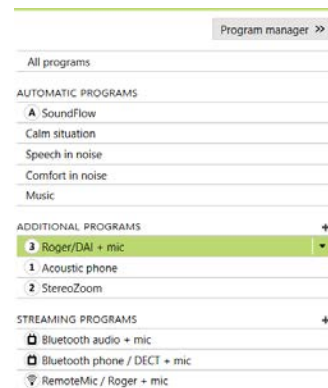
To edit or change the pairing ID, click **[Instruments]**. In **[Hearing aids]**, click the **[trashcan icon]** and reenter the pairing ID.

Entering in the pairing ID will not automatically setup the program structure, the program options, or the device options. These must be setup manually in Phonak Target. Refer to the program structure listed in the Bimodal Fitting Report to create and modify necessary programs to match the programming of the CI.



HA Program	Program Name	Program Options	CI #
A	Automatic (Startup Program) Startup: Deep	Default Settings	1
1	Acoustic Phone 2 bands	DualPhone Preferred phone ear: Enabled Left	2
3	StereoZoom 3 bands		3
3	Roger/DAS mic 4 bands Microphone: enabled		4

Adjustments and modifications to the programs can be made in **[Fine tuning]**. Click **[All programs]** to adjust all programs simultaneously. Click **[SoundFlow]** to modify all acoustic automatic programs. To modify a single program, click on one program in the list and adjust as needed.



Click on the **[+]** icon to add additional manual or streaming programs.

Click **[Program options]** tab to manage program options.

Click **[Device options]** to set the hearing aid beep configurations, as well as accessory options.

Programming the hearing aid will not affect the programming of the CI sound processor.

Note: the ComPilot is configured by the CI fitting software, SoundWave™, only. The pairing described above will automatically pair the Naída Q Link with the ComPilot. Do not attempt to connect or change the ComPilot configuration with Phonak Target.

Close the session at any time by clicking **[Save & close session]** in the top right corner of the screen. The wireless connection between the Naída Q Link and the CI starts automatically once the hearing aid has been disconnected from the fitting session.

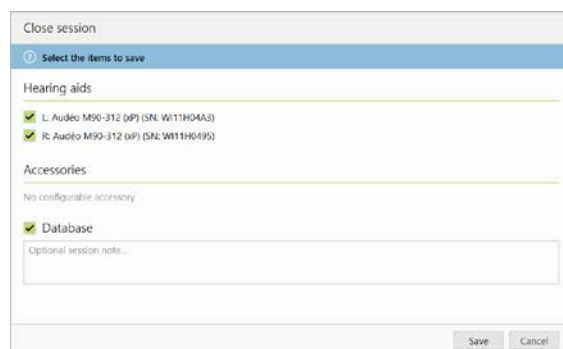
Finishing the fitting session

You can close the session at any time by clicking **[Save & close session]** in the top right corner of the screen. Select the items to save. Phonak trial hearing aids will default automatically to the maximum trial period of 6 weeks.


The standard save dialog will confirm the successful save of the hearing aids and accessories.


After the save, Phonak Target will guide you to the start screen.


If you are working under NOAH, you can go back to NOAH by clicking on **[Back to NOAH]** at the top right corner of the start screen.





Information and description of symbols


 With the CE symbol, Sonova AG confirms that this product meets the requirements of the Medical Devices Directive 93/42/EEC. The numbers after the CE symbol correspond to the code of certified institutions that were consulted under the above-mentioned directive.

 Indicates the medical device manufacturer, as defined in EU Directive 93/42/EEC.

 Indicates the manufacturer's catalogue number so that the medical device can be identified.

 Consult instructions for use. Instructions can be obtained on the www.phonakpro.com website.

 Provides further clarification about a feature or functionality or highlights relevant fitting information being applied

 Indicates a restriction in functionality that may impact the end user's experience or highlights important information that requires your attention

System requirements

Operating system	<ul style="list-style-type: none"> • Windows 10, Home / Pro / Enterprise / Education • Windows 8 / 8.1, latest SP, Pro / Enterprise • Windows 7, latest SP, Home / Professional / Business / Enterprise / Ultimate
Processor	Intel Core or higher performance
RAM	4 GB or more
Hard disk space	3 GB or more
Screen resolution	1280 x 768 pixels or more
Graphic card	16 Million (24bit) screen colors or more
Drive	DVD
Serial COM port	Only if RS-232 HI-PRO is used
USB ports One for each purpose	<ul style="list-style-type: none"> • Wireless adaptor with Bluetooth® technology* • Accessory programming • HI-PRO if used via USB port • Noahlink Wireless
Programming interfaces	Noahlink Wireless / iCube II / NOAHlink / RS-232 HI-PRO / HI-PRO USB / HI-PRO2
Noahlink driver	Latest version available
Noahlink Wireless driver	Latest version available
Internet connection	Recommended
Sound card	Stereo or surround 5.1
Playback system	20 Hz – 14 kHz (+/- 5 dB), 90 dB
NOAH version	Latest version (NOAH 4.4 or higher) Please check the NOAH limitations for Windows 64 bit operating systems on http://www.himsa.com
TargetMatch	NOAH Version 4.4.0.2280 or higher Otometrics Otosuite 4.81.00 or higher Otometrics AURICAL FreeFit for REM & AURICAL HIT for test box measurements

*The Bluetooth® word mark is a registered trademark owned by the Bluetooth SIG, Inc.

CE mark applied 2020



Manufacturer:
 Sonova AG
 Laubisrütistrasse 28
 CH-8712 Stäfa



058-0125-070

Phonak Target 7.0 DVD