



roger

# Roger™ for young children

When a child can hear more words, life is on



A Sonova brand

**PHONAK**  
life is on



# Ears are the doorway to the brain

Ears capture sound from the environment and send it to the brain; it is the brain that processes and gives meaning to that auditory information. As such, our ears can be thought of as ‘doorways’ to the auditory brain centers where hearing truly occurs. For this reason, we can consider hearing loss in childhood as a ‘doorway problem.’ For families who choose listening and spoken language as a child’s mode of communication, a doorway problem can prevent auditory information from reaching specific regions in the brain. This can result in an impaired ability to learn, to listen, talk, and read.\*

Our proven pediatric solutions include hearing aids, Roger systems, and wireless accessories that work together to open the doorway to the brain. Research tells us that there is a link between language exposure and child development. These solutions play a pivotal role in providing access to the 45 million words required for a child to be ready for school and literacy, as well as continuing to maximize auditory development throughout childhood and the teenage years.\*

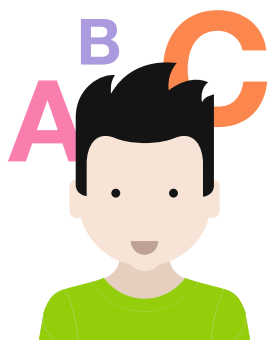
# Every word counts

At Phonak, we understand that you want to offer your youngest patients and their families superior, easy-to-use technology that truly provides access to all the sounds needed for speech and language development. Accurately fit, consistently worn amplification, coupled with Roger, and used in a language rich environment can guard against language delays.\*

A recent study demonstrated that the use of a Roger system at home provides preschool children with access to up to 11 more words a minute, compared to wearing hearing aids alone.\* That's approximately **5,300 more words in an 8 hour day**. Based on an average hearing aid use time, this translates to a 42% increase in caregiver talk made available to a child.

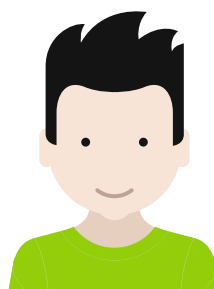
## More responsiveness

Based on parent responses, while using the Roger system...



80%

of families report  
greater responsiveness



35%

of families report less  
frustration in their children

### Did you know?

Once mobile, children spend 42% of their day more than 2 meters (6 feet) away from a parent or caregiver.\* This can be challenging, as hearing aids may not be enough for access to clear speech in situations where a child is not in direct proximity to the person speaking.

# Roger made easy

Compatible with virtually every hearing aid, cochlear implant and bone-anchored device, our range of Roger microphones and receivers provide toddlers with hearing loss access to more words, wherever they go.

## Roger and Phonak Sky™

A Roger receiver coupled to a Sky device\*\* will automatically detect the signal from a Roger microphone and activate the 'Roger + Mic' program. No additional programming of the hearing aids or manual adjustment is needed, providing access to improved hearing quickly and easily.

The Roger and directional setting provides improved access to conversations by 26% over Roger and omnidirectional.\*



Roger is water resistant and dust tight (IP68)\*\*\* and safe for children to use. Roger receivers used with Sky BTEs with 13 or 675 batteries can have a tamperproof housing added, to keep curious kids from opening the battery door.

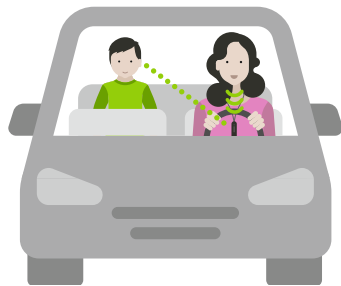
\*\* Sky V and Sky B devices with direct audio input (DAI)

\*\*\* IP68 indicates that the hearing aid with Roger design integrated receiver attached is water resistant and dust tight. It survived continuously in 1 meter of water for 60 minutes and 8 hours in a dust chamber as per the IEC60529 standard, no traces of dust were evident within the housing. The Roger X is not IP68 nor tamper resistant

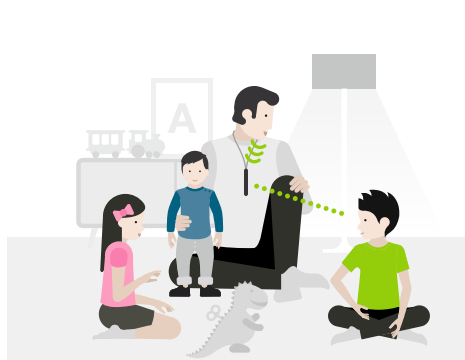
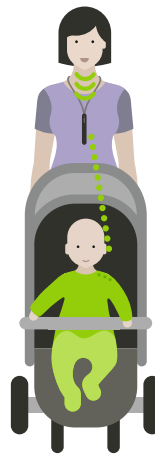
# Roger can be used anytime, anywhere

A young child's world is shaped by interactions in constantly changing environments. As such, it is important that they feel connected to it, whether at home, outdoors or in preschool. A Roger system can provide access to a parent's or caregiver's voice at a distance and in noise, helping to instill confidence while they explore the world.

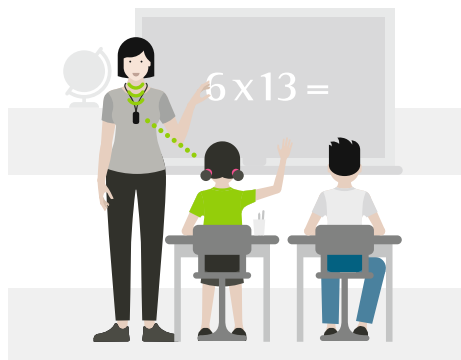
During car journeys, hearing can be challenging due to car and road noise, particularly for a child sitting in the back seat.



For a child sitting in a stroller, the voice of the person pushing them may not be clear especially without visual cues.



Listening from across the room can be difficult, especially when there is background noise.



At preschool or daycare with lots of other children around, it can be hard to hear and follow a teacher's instructions.



On a playground, a child is often surrounded by noise, and not always close to their parents and caregivers.

# It's never too early for a child to start listening

Roger use from the beginning ensures a child has full access to speech in their ever-changing noisy worlds. Moreover, your young patients will be exposed to all the essential sounds required for speech and language development. Providing a family with a Roger system can make a remarkable difference in reaching the needed 45 million words.\* And you'll know you're doing everything you can to give them the best start in life.



---

## Life is on

At Phonak, we believe that hearing well is essential to living life to the fullest. For more than 70 years, we have remained true to our mission by developing pioneering hearing solutions that change people's lives to thrive socially and emotionally. Life is on.

[www.phonakpro.com](http://www.phonakpro.com)

