


Using Roger Pen

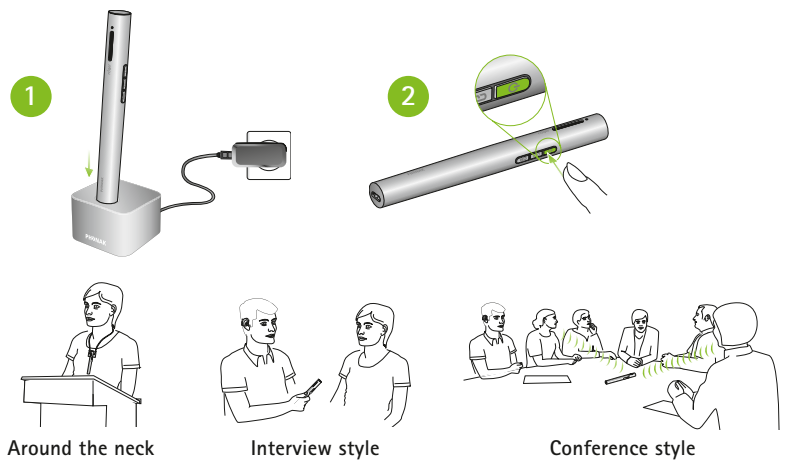
Reference Sheet

roger



Designed with discretion in mind, the Roger Pen features adaptive wireless transmission, fully automated settings, wideband audio Bluetooth for cell phone use, TV connectivity, and an audio input for listening to multimedia devices.

Daily use of Roger Pen

1. Charge Roger Pen either in the docking station or using the mini-USB power cord. Charge for 2 hours for maximum use.
2. Turn microphone on by pressing the  button for 2 seconds until the indicator light turns white.
3. The pictures on the right show how to use the Roger Pen in different situations.
4. Charge the Roger Pen daily after usage.



Using Roger Pen with Bluetooth cell phones and multimedia devices

1. After the Roger Pen is paired and connected with the Bluetooth cell phone (consult Roger Pen User Guide), it is ready to use for phone calls.
 - Answer a call by pressing the  button on the Roger Pen. Speak into the Roger Pen.
 - End a call by pressing the  button.
 - Make a call by dialing the number on the cell phone. You will hear the ringing tone and conversation through your hearing aids.
2. Connect your Roger Pen to a multimedia device in either of the following ways before switching on the multimedia device:
 - a) Connect the docking station to the audio device and dock the Roger Pen.
 - b) Connect the Roger Pen using the micro-USB cable.

