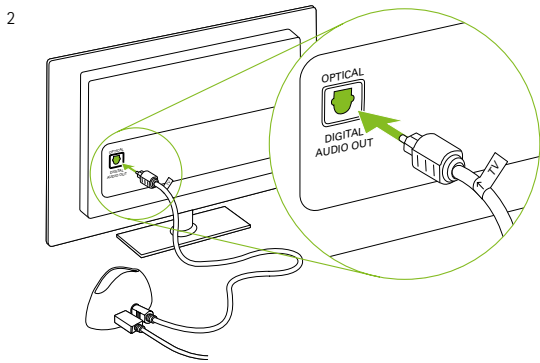
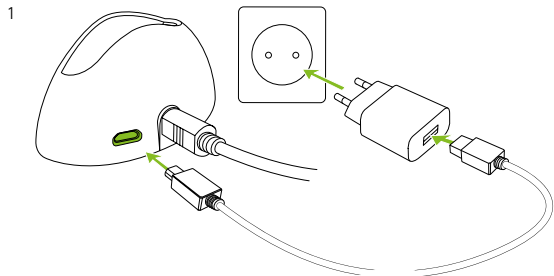
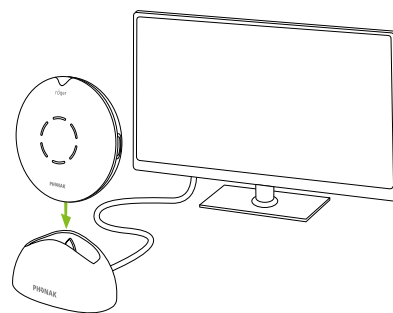


6

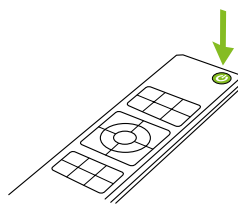
Use with the TV / Verwendung mit dem Fernseher
Utiliser avec le téléviseur / Gebruik met de televisie



3



4



7

For further information, please refer to the User Guide.
Weitere Informationen zur Anwendung finden Sie in der
Gebrauchsanweisung.
Pour plus d'informations, veuillez vous référer aux
instructions d'utilisation.
In de gebruiksaanwijzing vindt u meer gedetailleerde
informatie.



Sonova Communications AG
Herrenschwandweg 4
CH-3280 Murten
Switzerland

www.phonak.com



029-3274/V4.00/2021-06/td Printed in XXXX © Sonova Communications AG All rights reserved

Roger Select™ iN

Quick setup guide | Schnellstartanleitung
Guide d'installation rapide | Snel aan de slag



roger

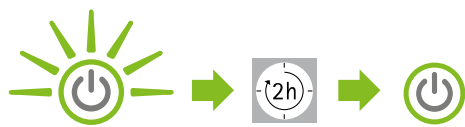
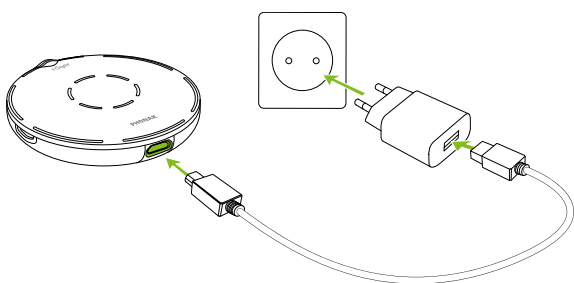


A Sonova brand

PHONAK
life is on

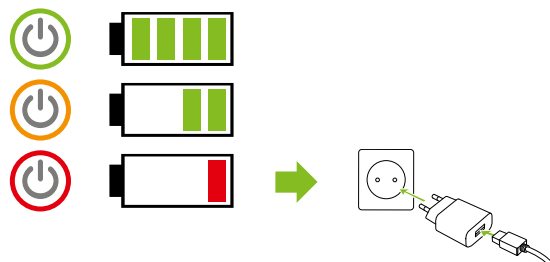
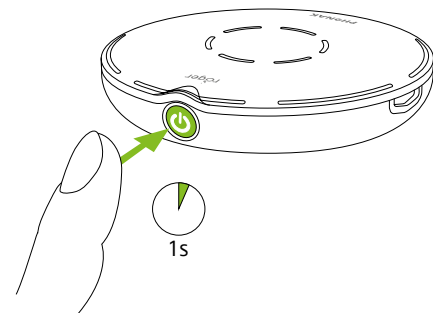
1

Charging / Aufladen
Charger / Laden



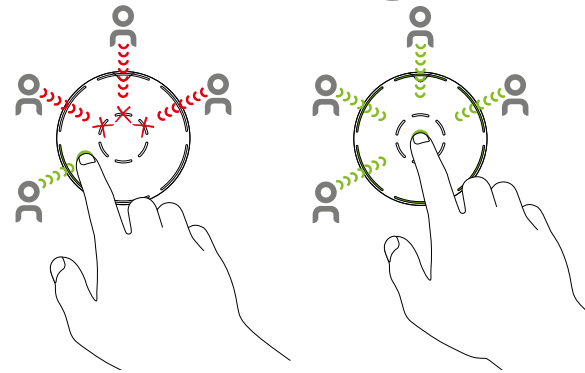
2

Switching on / Einschalten
Mettre en marche / Inschakelen



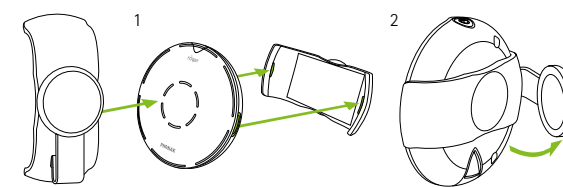
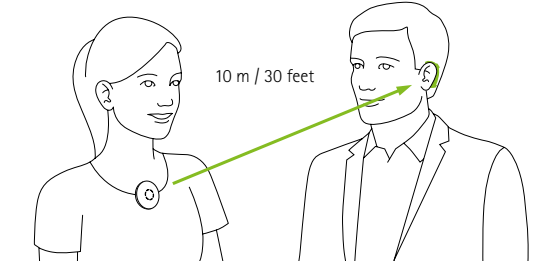
3

Use on the table / Verwendung auf dem Tisch
Utilisation sur la table / Gebruik op tafel

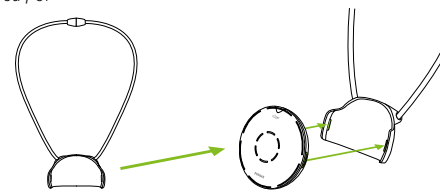


4

Use with a speaker / Verwendung mit einem Sprecher
Utilisation avec un locuteur / Gebruik met een spreker



or / oder / ou / of



5

Use with an audio device / Verwendung mit einem
Audiogerät / Utiliser avec un appareil audio / Gebruik
met een audio-apparaat

