

Dynamic SoundField DigiMaster X

Installation Instructions



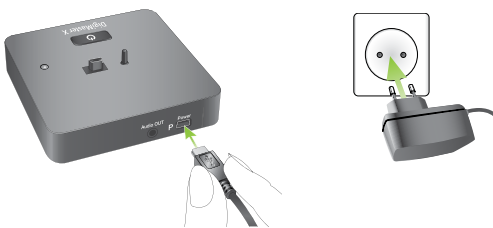
DigiMaster X is a Dynamic SoundField receiver that upgrades an amplification system to intelligent dynamic behavior. This guide is aimed at professional installers.

Product description

- 1 Audio output
- 2 Power input
- 3 mini USB interface
(for charging inspiro transmitter)
- 4 Status indicator (LED)
- 5 ON/OFF switch



Connect to the mains



Pairing with inspiro

(see DigiMaster X package insert)



Placement

- The distance between the DigiMaster X and the room's existing amplifier system should be as short as possible.
- The power supply for the DigiMaster X and the power supply for the amplifier can be fed from the same mains.
- Do not place the DigiMaster X in a metallic cabinet (shielding effect could occur).

Connecting the wirings

- Switch Off the amplifier and DigiMaster X.
- Connect the DigiMaster X audio output with the microphone input of the amplifier. Use professional-grade audio cables.
- Switch On the amplifier and DigiMaster X.

Setting the microphone gain

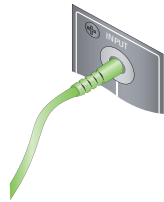
The correct microphone gain setting is crucial to avoid acoustical feedback.

- Reduce the input gain of the amplification system
- Position the microphone correctly and switch On DigiMaster X
- Increase the DigiMaster X's volume up to + 8dB via the inspiro menu
- Increase the input gain of the amplification system until acoustical feedback occurs
- Reduce the gain of the amplification system until the feedback disappears
- Walk around the room and check that every position is free of feedback
- Reset the DigiMaster X's volume to 0dB or the newly desired volume via the inspiro menu

Please note: the microphone gain of the classroom amplification system cannot be accidentally changed. The volume in the classroom will be set with the inspiro.

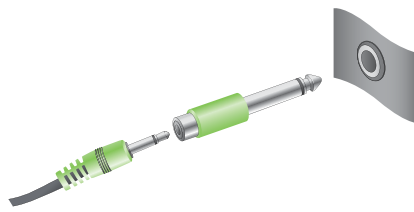
Dynamic SoundField DigiMaster X

Connection to amplification system



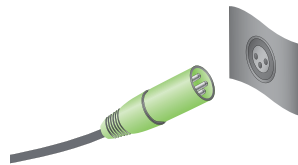
Mic input = 3.5 mm mono jack

3.5 mm Jack cable



Mic input = 6.3 mm <-> 1/4 inch mono jack

3.5 mm <-> 6.3 mm Jack adapter

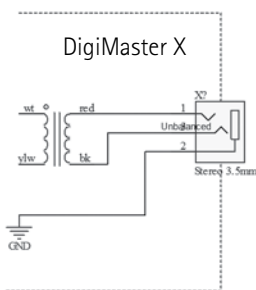


Mic input = XLR

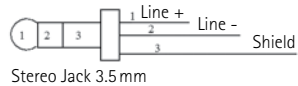
3.5 mm <-> XLR jack cable

Balanced input vs unbalanced input

Both balanced and unbalanced system inputs can be used with the DigiMaster X. However the balanced connection is recommended.

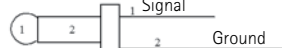


Balanced



- 1 = Tip = Line +
- 2 = Ring = Line -
- 3 = Sleeve = Shield

Unbalanced



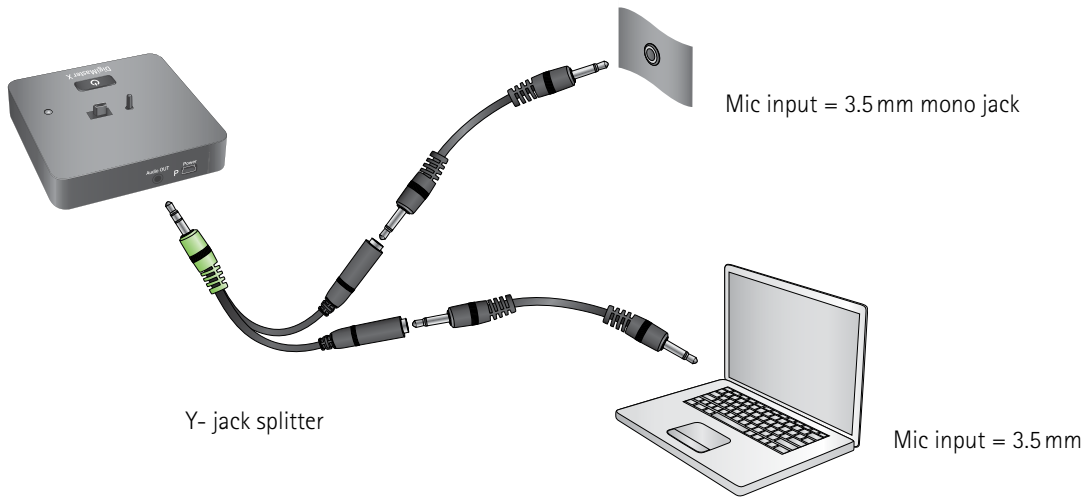
- 1 = Tip = Signal
- 2 = Sleeve = Ground

Mono Jack 3.5mm

The DigiMaster X has a balanced transformer-coupled mono output to interface with existing amplification systems.

Dynamic SoundField DigiMaster X

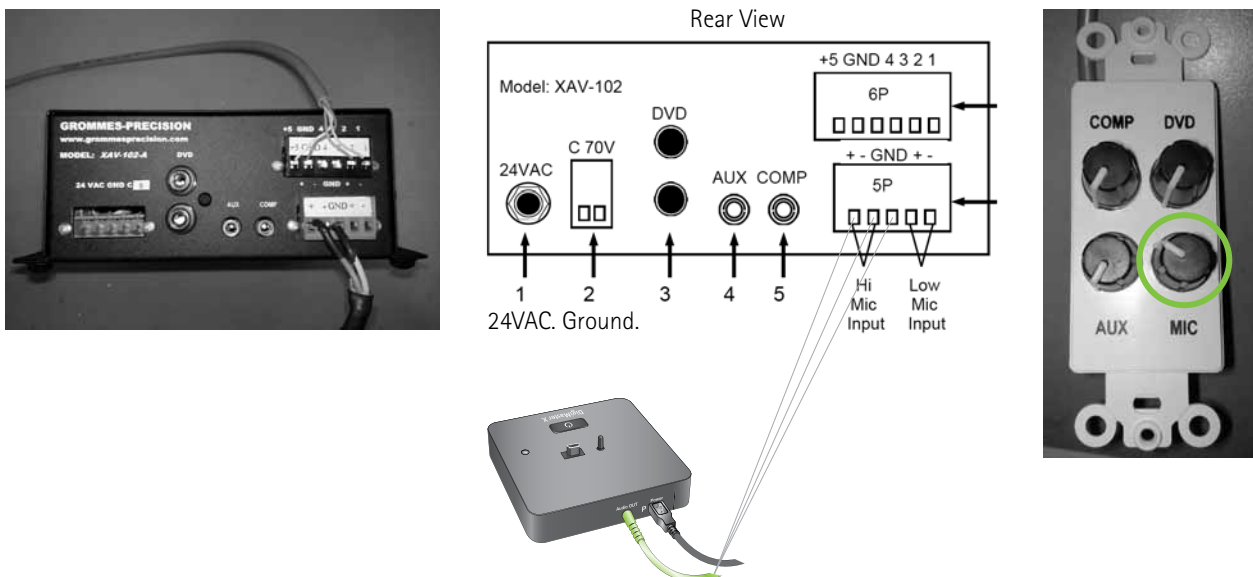
Connection to computer (recording) and amplification system



Caution: such connections may cause hum.

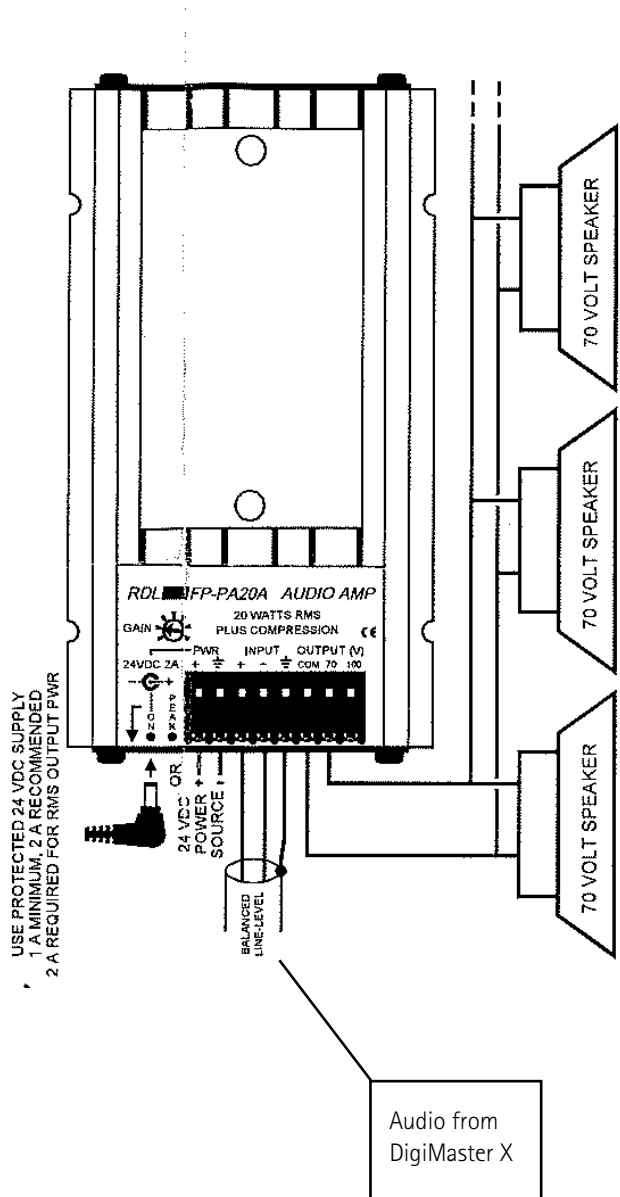
Connection to Grommes-Precision XAV-102-A

The gain of the microphone input is set by a potentiometer on the Wall Plate Remote Module.
Precautions should be taken to prevent gain changes.



Dynamic SoundField DigiMaster X

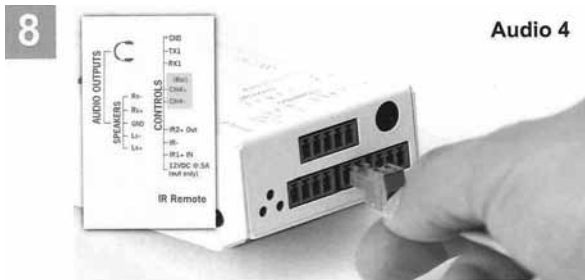
Connection to RDL FP-PA20A AUDIO AMP



Dynamic SoundField DigiMaster X

Connection to Calypso CA-1000

The CA Config software program is required to set the gain of the CA-1000.



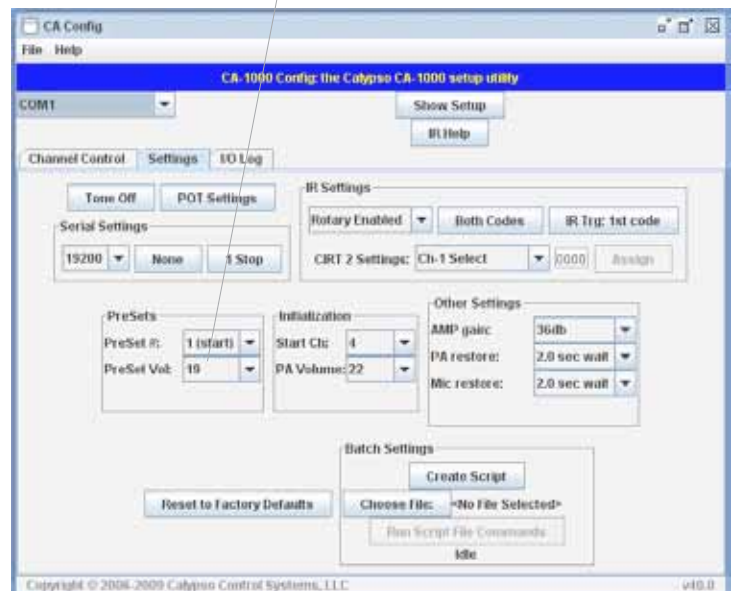
Terminate the 2-pin Phoenix connector to the CH4+/CH4-(Bal) series-socket as depicted above.



Shielding



Identical values



The screenshot show:

- Set-up on channel 4 for DigiMaster X
- Mono, Gain 32
- Fine-tune the volume
- Change the 'PreSet Vol:' to the same value as the Master out volume