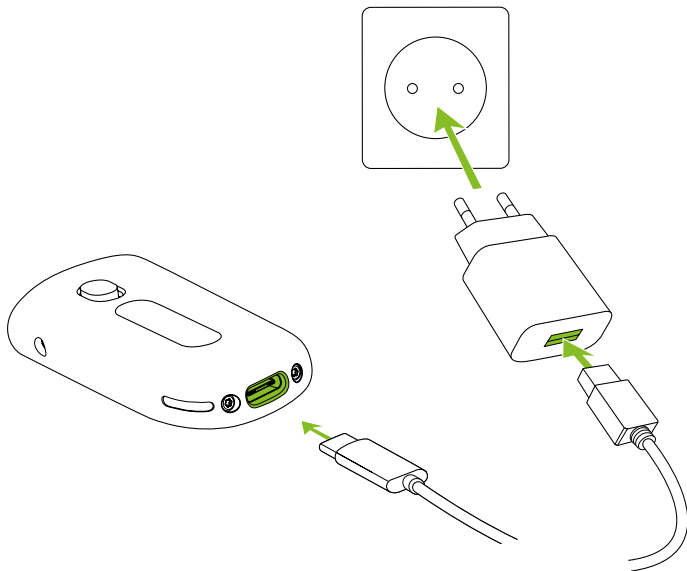


Roger NeckLoop for Dynamic SoundField

Installation Instructions

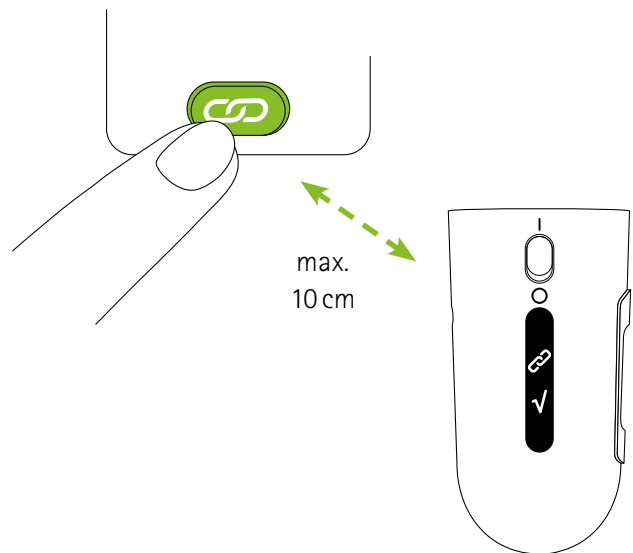
Roger NeckLoop is a Roger device that upgrades an amplification system to intelligent dynamic behavior. This guide is aimed at technicians.

Connect to the mains



Connect to Roger microphones

See Roger NeckLoop quick setup guide



Placement

- The distance between the Roger NeckLoop and the room's existing amplifier system should be as short as possible.
- The power supply for the Roger NeckLoop and the power supply for the amplifier can be fed from the same mains.
- Do not place the Roger NeckLoop in a metallic cabinet (shielding effect could occur).

Connecting the wirings

- Switch Off the amplifier and the Roger NeckLoop.
- Connect the Roger NeckLoop audio output with the microphone input of the amplifier. Use professional-grade audio cables.
- Switch On the amplifier and the Roger NeckLoop.

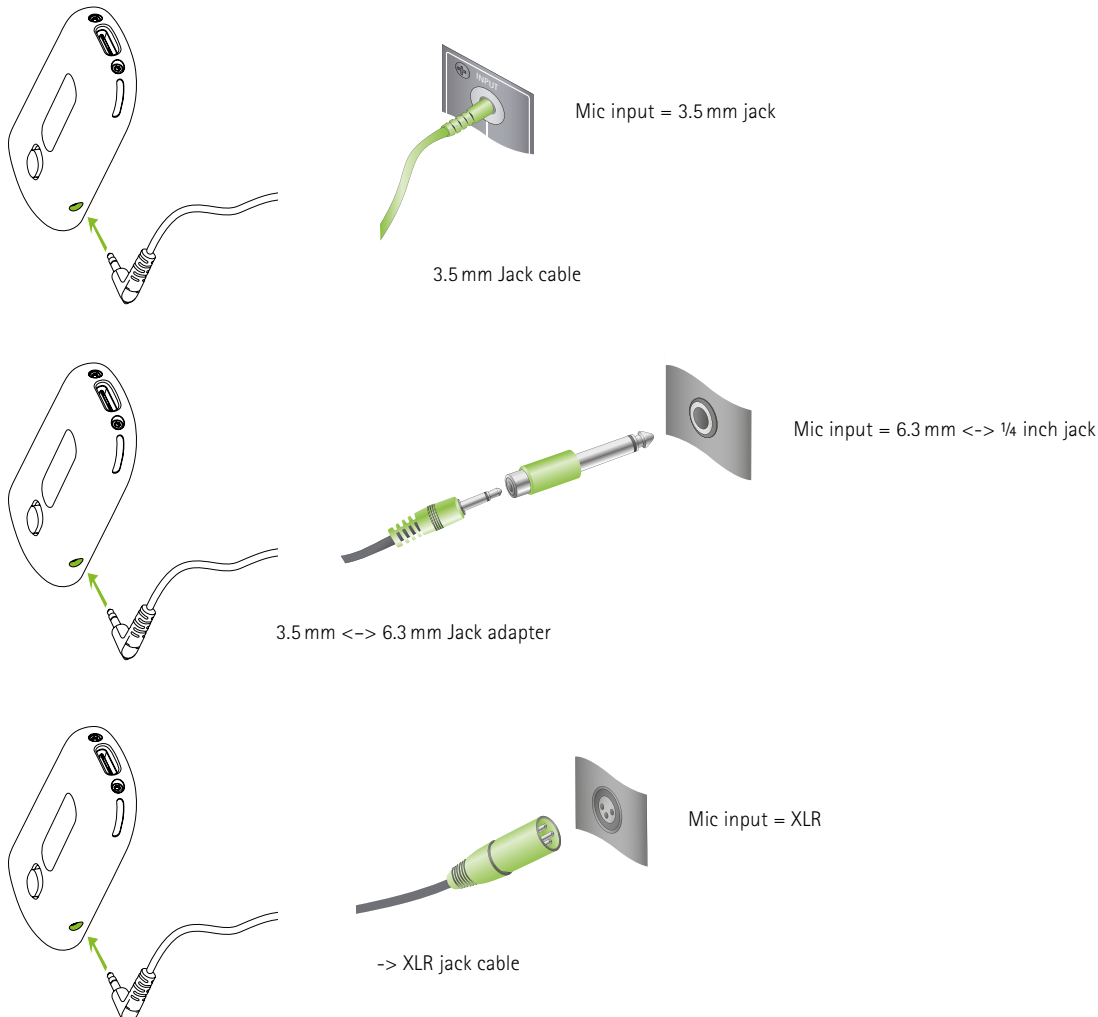
Setting the microphone gain

The correct microphone gain setting is crucial to avoid acoustical feedback.

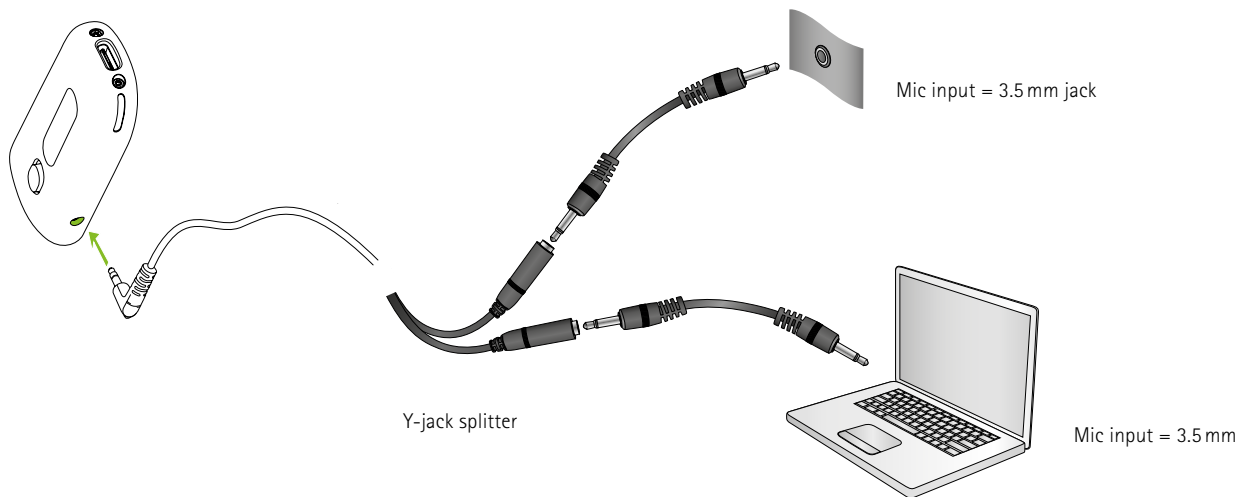
- Reduce the input gain of the amplification system
- Position the microphone correctly and switch On Roger NeckLoop
- Increase the Roger NeckLoop's volume to 50% of maximum by pressing the volume button
- Increase the input gain of the amplification system until acoustical feedback occurs
- Reduce the gain of the amplification system until the feedback disappears
- Walk around the room and check that every position is free of feedback
- Reset the Roger NeckLoop's volume to the middle or to the newly desired volume by pressing the volume button

Please note: the microphone gain of the classroom amplification system cannot be accidentally changed. The volume in the classroom will be set with the Roger microphone.

Connection to amplification system



Connection to computer (recording) and amplification system



Caution: such connections may cause hum.

Connection to CAT 855 Lightspeed

Connect the the cable adaptor 1 × 3.5 mm, 2 × RCA from the Roger NeckLoop output and CD/DVD input of the CAT 885 amplifier.



Set the microphone gain

Connect the Roger microphone with the Roger NeckLoop.

Increase the Roger NeckLoop's volume up to maximum by pressing the volume button.

Turn the volume knob of the CD/DVD input clockwise as far as it will go.

In case of acoustical feedback, decrease the volume of the CAT 855 amplifier incrementally, until you can walk throughout the room without any acoustical feedback.

Reset the volume level of the Roger NeckLoop's volume to the middle or to the newly desired volume by pressing the volume button.