

## FM fitting guidelines for Cochlear's Nucleus 5



### List of required parts

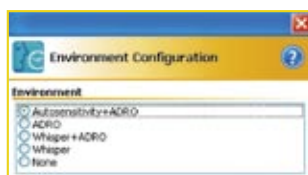
- 1** Cochlear™ Nucleus® sound processor (CP810)\*
- 2** ML14i

- 1** Cochlear™ Nucleus® sound processor (CP810)\*
- 2** Euro Accessory Adaptor
- 3** MLx/MicroMLxS

\* Minimum Build Standard C of the sound processor is required to work with the ML14i and MLx

### Pre-fitting

- In Cochlear™ Custom Sound™ Suite 3.2, select the **Autosensitivity™ + ADRO® configuration in the SmartSound™ Everyday environment and use a mixing ratio of 1:1 for the FM program.**



- When using MLx, the MLx should be programmed with FM SuccessWare for the Cochlear™ Nucleus® (see page 32 of the brochure "FM Solutions for Cochlear Implants", available from your Phonak shop).
- When using MicroMLxS, increase the FM level to +16 dB with FM SuccessWare.

3. Turn the sound processor on.
4. The processor will automatically detect the presence of the FM receiver. The recipient will hear the environment through the processor microphone and the FM combined.
5. Test the patient's speech recognition in quiet with the CI alone and then through the wireless FM system only (out of range of the processor microphone). Performance should be similar between these two conditions. If the FM is too loud or too soft, the FM volume can be changed using FM SuccessWare or the "Set FM volume" function in inspiro. Note that the default level for the ML14i is set to +2 dB. The +2 dB setting should also be selected for MLx as default setting.
6. Evaluate FM benefit as well as the appropriateness of FM settings through speech-recognition assessment in the clinic and standardized questionnaires completed by the recipient, family members and teachers.

### Fitting with the user

1. Turn all equipment off.
2. Plug the ML14i into the processor's accessory socket or connect the MLx/MicroMLxS to the Euro Accessory Adaptor and the Euro Accessory Adaptor to the processor's accessory socket. If you are using MicroMLxS, move the switch to the double green dot position.

## Advanced controlling

To enable advanced controlling, the Cochlear™ Nucleus® CR110 Remote Assistant must be set to Advanced Mode.

### FM only

If, in a situation, FM only is required, the customer can change the mixing ratio to 'A' on the Cochlear™ Nucleus® CR110 Remote Assistant. 'A' refers to accessory only and mutes the microphones of the sound processor.

**Note:** counsel your patient on the risk of FM only. When selecting the 'A' (accessory only) setting on the Remote Assistant, the processor's microphones are deactivated (muted). This may significantly reduce ambient awareness, which can pose a serious risk in the workplace, in the car, or in traffic.

### Muting the FM signal

The CI user can change from using the FM signal to using the microphones only, while leaving the FM receiver attached. The CI user just needs to press the upper button on the sound processor. A single long flash of orange confirms that the FM signal is muted and the microphones are enabled. To switch back to the combined FM and microphones use, press the upper button again. A single long flash of green confirms that the FM signal (with the microphones) is enabled again.

## Recommendations

To avoid interference, the following channels are recommended for use:

N Band: N09, N12, N13, N17, N18, N52, N57, N61, N62, N64, N65, N68, N73, N76, N77, N79

H Band: H06, H07, H17, H18, H20, H38, H39, H46, H47, H48, H59, H77, H78, H79, H85, H86, H87, H88, H89, H90

## Programming

The ML14i, MLxi and MicroMLxS can be programmed with the FM SuccessWare. Attach the FM receiver to the sound processor and insert the sound processor into the FM programming unit, or put everything in front of inspiro, depending on the programming option selected. Make sure the processor has good batteries and the accessory input is not disabled.

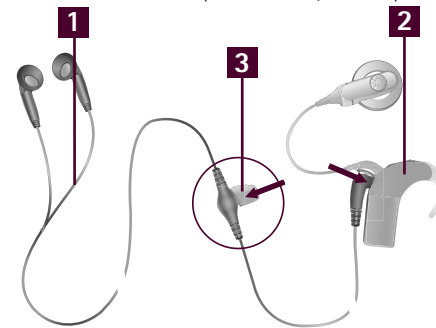
## Listening check

It is recommended to perform the listening check by using the Cochlear™ Nucleus® CP800 Series Monitor Earphones.

1. Remove the ML14i or the Euro Accessory Adaptor from the sound processor
2. Turn on the sound processor
3. Connect the monitor earphones to the accessory socket of the sound processor – the sound processor will detect that they are present
4. Connect the ML14i, or the Euro Accessory Adaptor with MLxi or MicroMLxS attached, to the monitor earphones (as shown in the picture) – the sound processor will detect this new accessory.
5. Switch the FM transmitter on

Now you can listen to both the incoming signal (to the processor microphones) and the FM signal when speaking into the FM transmitter.

**Note:** the signal quality of the monitor earphones does not reflect the sound experienced by the implant user.



- 1 Cochlear™ Nucleus® CP800 Series Monitor Earphones
- 2 Cochlear™ Nucleus® 5 sound processor (CP810)
- 3 ML14i



[www.phonakpro.com](http://www.phonakpro.com)

