

Fitting Guide

röger



Roger and Cochlear™ Baha® Sound Processors

This guide provides detailed information on how Roger X should be used with Cochlear™ Baha® Sound Processors Generation 3 and Generation 4 to achieve the best possible performance.

Set-up

The table below shows what is required to connect a Cochlear Baha sound processor to a Roger X receiver.

Product name
Cochlear Baha sound processor (picture shows Cochlear Baha® 4 Sound Processor / Baha® BP100 sound processor)

Roger X
Receiver



Pre-fitting for Baha® 3 Sound Processors

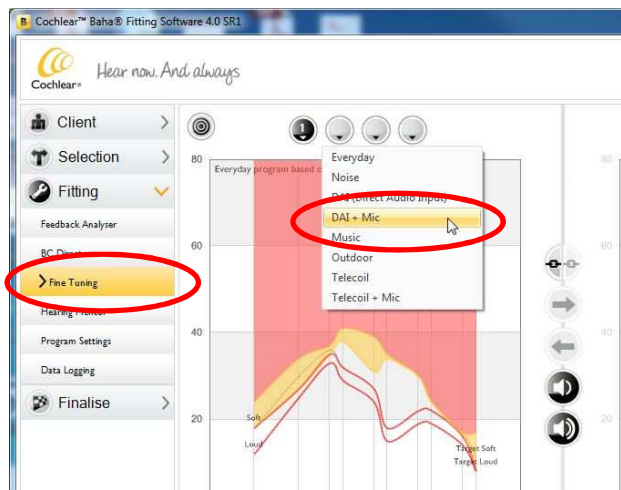
For the Baha BP100 and BahaBP110 sound processors no pre-fitting is required.
The DAI program is already pre-defined as program number "3".

Just plug the Roger X into the sound processor and select program number "3" on the Baha.

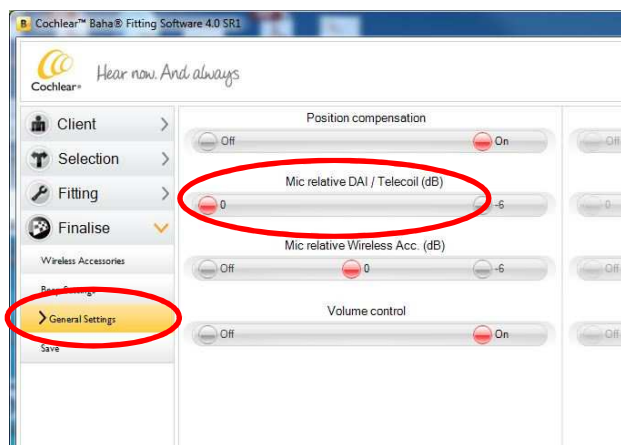
Pre-fitting for Baha® 4 Sound Processor

Launch the Cochlear Baha® Fitting Software 4.0 SR1, enter the Fine Tuning screen and activate the DAI + Mic program for the Baha 4 Sound Processors.

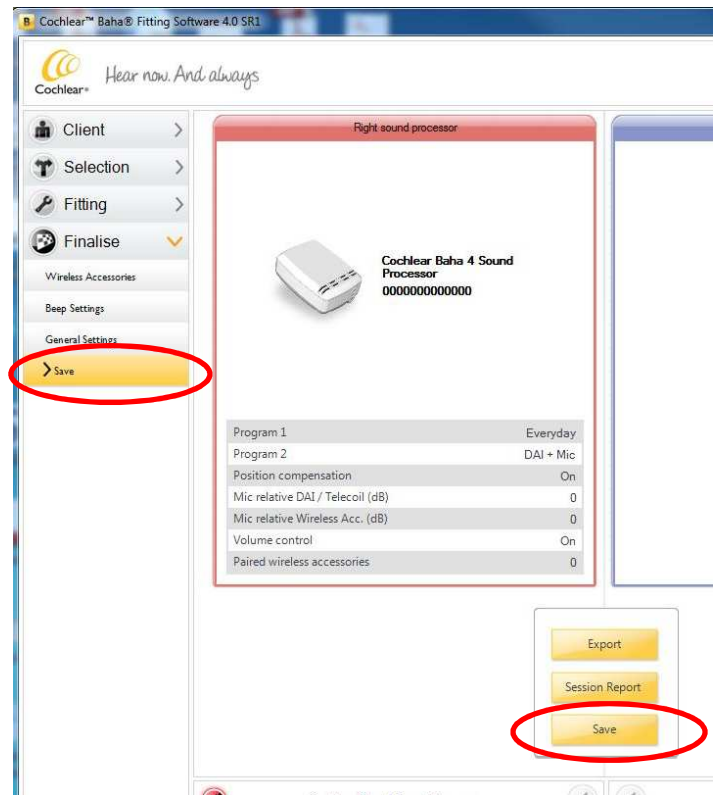
1. Select "DAI + Mic" on a program slot of your choice.



2. Ensure, the "Mic relative DAI / Telecoil (dB)" is set to 0 dB



3. Save



Cochlear Baha® Fitting Software 4.0 SR1 (4.0.0.5132)

Connect

Hold the Roger inspiro microphone close to Roger X (within 10 cm/4 inches) and press the Connect button. Your patient should now report that he/she has heard the confirmation beeps (a low tone followed by a high tone).

If your patient didn't hear the confirmation beeps, you may need to switch the processor into the DAI program. Repeat this connect process until your patient hears the beeps.

Getting started

1. Turn all equipment off.
2. Plug the Roger X into the Baha sound processor.
3. Switch on the Baha sound processor.
4. Select the dedicated "DAI + Mic" program, the output of the Roger X is mixed with the signal of the Baha microphones.
5. Test the patient's speech recognition in quiet at normal sensitivity with the Baha sound processor alone and then through the Roger system only (out of range of the processor microphone). Performance should be similar between these two conditions.

If the Roger signal is too loud or too soft, the Roger inspiro may be required to optimize the Roger volume level on the Roger X.¹

¹ Available for Roger X (02) only

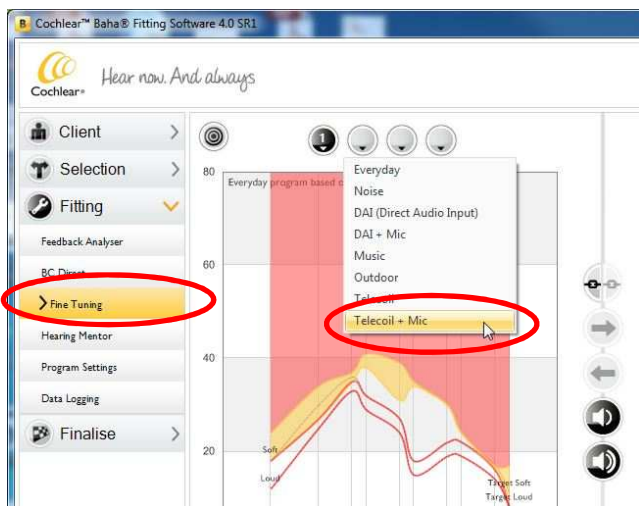
Using Roger via the T-Coil

Alternatively, the receiver Roger MyLink can be used after plugging in the Baha Telecoil to the Europin Direct Audio Input (DAI) on the Baha sound processor.

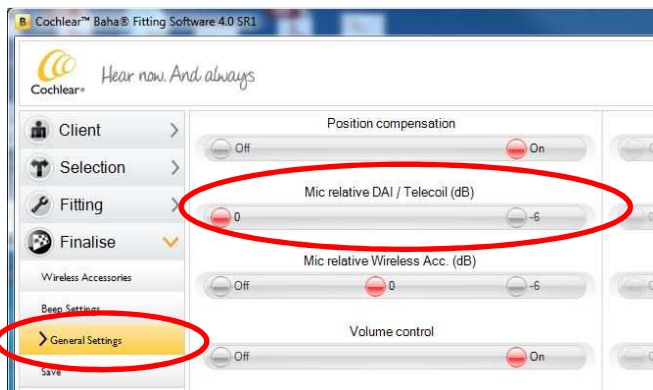


Pre-fitting for Baha® 4 Sound Processor when used with Roger MyLink

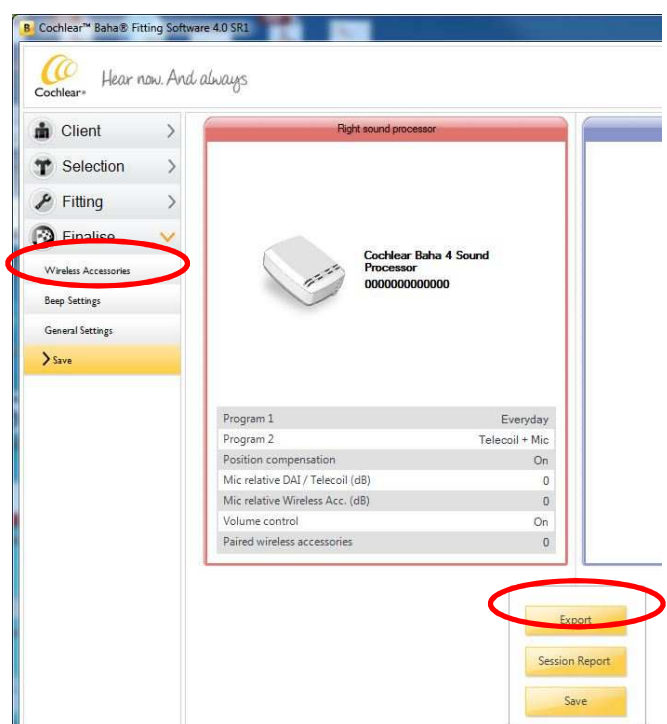
1. Activate the "Telecoil + Mic" program



2. Ensure, the "Mic relative DAI / Telecoil (dB)" is set to 0 dB



3. Save



Cochlear Baha® Fitting Software 4.0 SR1 (4.0.0.5132)

Troubleshooting

Signal from Roger microphone cannot be heard

Roger X is not connected to the Roger microphone

Connect Roger X with the Roger microphone

Roger microphone is not switched on or is muted

Switch on the Roger microphone and make sure it is not muted (refer to User Guide)

Baha user is out of range of the Roger microphone

The Baha user has to move closer to the Roger microphone to be within its operating range

Batteries not suitable

Please use dedicated high power batteries (e.g. 4hole Rayovac) or rechargeable batteries

Sound Processor microphones are attenuated

Microphone sensitivity

Make sure microphone sensitivity has not been reduced in the DAI program

The Roger microphone's signal suffers from interruptions

The Roger microphone is too far away or shielded by obstacles (e.g. human body)

Reduce the distance between Roger X and the Roger microphone, and ensure both devices are in line of sight

Listening check

Product name

MLx Audio Checker and Roger X



Roger X plugged directly into the MLx Audio Checker

Adapter / Roger receiver

Special features for educational system²

Programming of EasyGain

If the volume of the Roger system is not satisfactory, you can change the gain of the receiver via Roger inspiro. Hold Roger inspiro close to Roger X (less than 10 cm/4 inches) and press **Check**. Roger X information will appear on the inspiro's screen.

Press **Manage**, scroll with the cursor to **EasyGain** and press **OK**. Now you can change the gain of the receiver in the range of -8 to +8 dB.

² Available for Roger X (02) only