

Roger™ Repeater

Placement guide



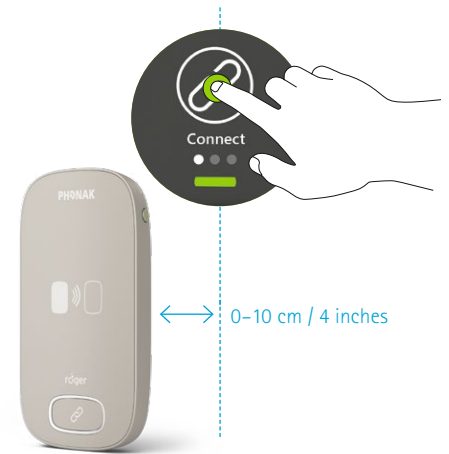
Roger Repeater is designed to allow enhanced listening coverage over very large areas, by extending the network of a primary Roger for Education microphone. One Roger Repeater or more can be placed around school auditoriums and gym halls, so that no matter where Roger listeners sit or play, they can hear what is being said. With full compatibility, Roger Repeaters can be connected to a network of all Roger for Education devices, including Roger WallPilots.

For more information visit www.phonakpro.com

Initial connection

Roger Repeater can be connected in the network of Roger for Education microphones/transmitters by pressing **Connect** on the primary microphone while holding the Roger Repeater within 10 cm/4" of the primary.

Follow steps above with any additional Roger Repeaters being used in the network. After initial connection, this does not have to be repeated. Roger Repeaters can be placed in the area as described below.

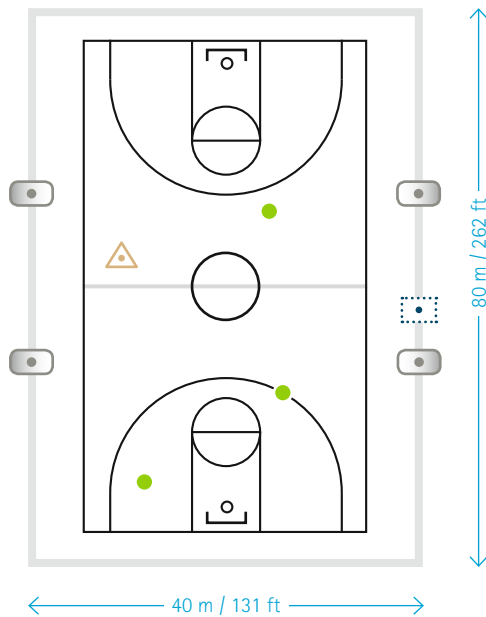


Roger Repeater placement

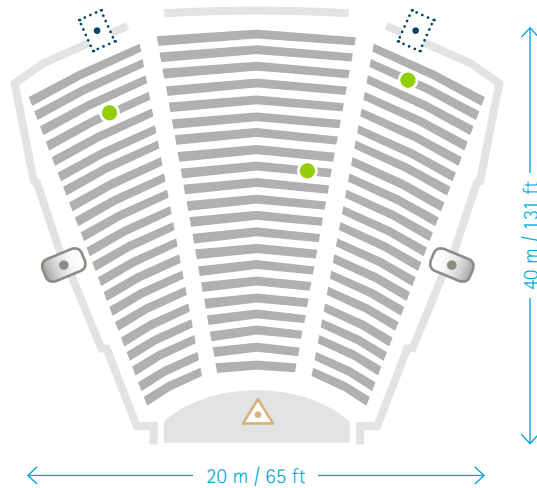
Roger Repeater placement will depend on the usage desired, size of the area, or placement of the talker and/or the listener. Please see below for placement examples. Larger areas than shown can be covered with additional Roger Repeaters.

Gymnasium

Coach with Roger microphone in active game

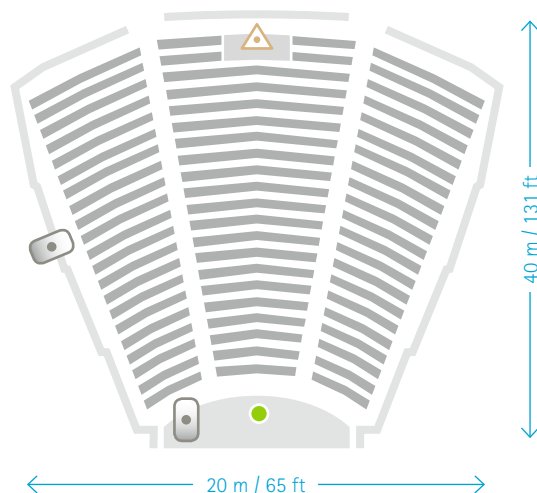


- Roger Mic/Roger transmitter
- Roger Repeater
- Roger listener
- Roger WallPilot



Auditorium/Theater setup 1

School assembly with talker with Roger microphone on the stage



Auditorium/Theater setup 2

School performance with soundboard connected to Roger transmitter equipment, with Roger listener on stage