

Masks present challenges for those with hearing loss, including:



- loss of visual cues
- attenuation of high frequency speech sounds

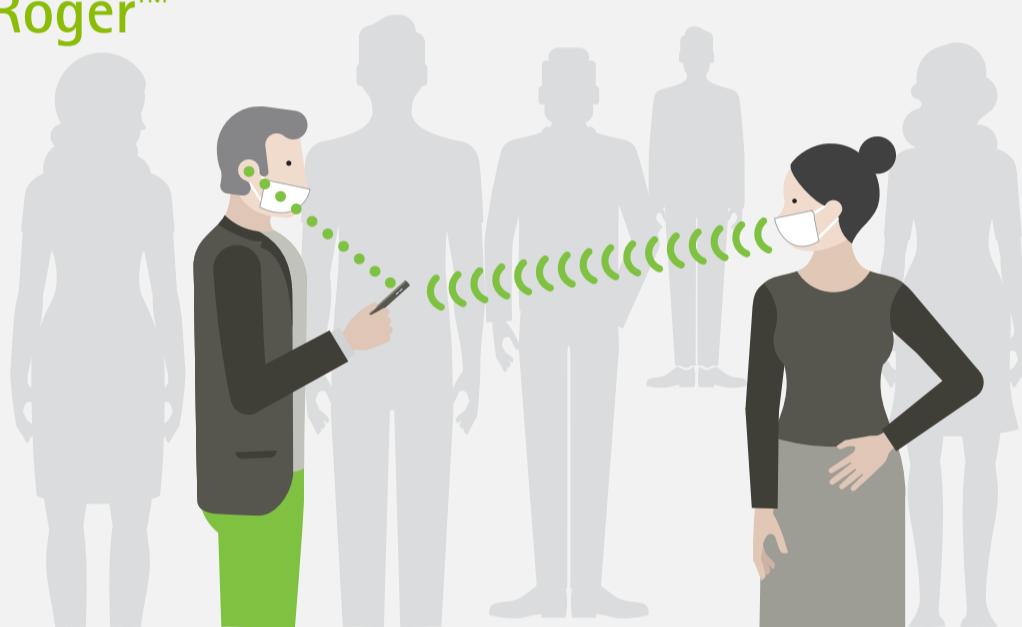
This can result in significantly worse speech perception when listening to a talker wearing a cloth mask compared to no mask



Three ways to improve communication for your clients

1) Add Roger™

roger



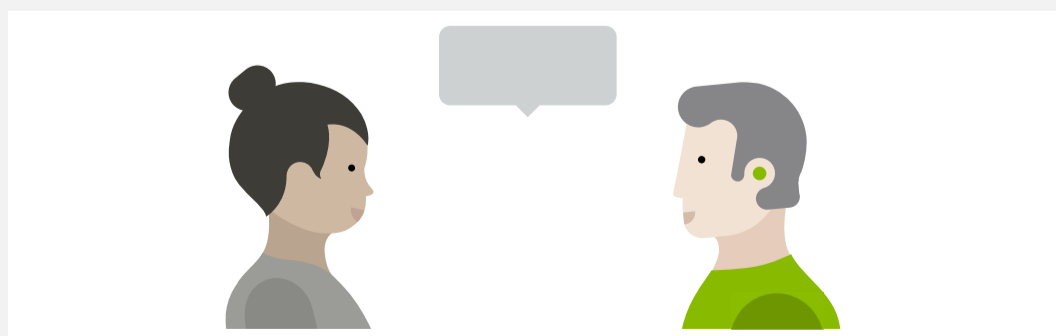
Roger benefits clients listening through a cloth mask or a ClearMask™*

2) Add a 'Mask' program

A fine-tuned manual 'Mask' program is recommended to overcome the effects of a mask on the speech signal



3) Counsel on communication strategies



* ClearMask™ is a trademark of ClearMask, LLC.

The content of this infographic is based on: Taylor, D. & Seitz-Paquette, K. (2020). The masking dilemma: Helping patients communicate during COVID-19. Phonak Field Study News. Retrieved from www.phonakpro.com/evidence, accessed September 3rd, 2020.