

Phonak Target 6.2

TargetMatch Fitting Guide

TargetMatch, developed by Phonak in collaboration with Otometrics, is an integrated system of hearing aid fitting and fine tuning parameters together with Otometrics' AURICAL hardware and software. Available within Phonak Target fitting software, it enables you to easily fit and verify hearing aids. TargetMatch will guide you through proper placement of the probe tube, perform real ear and 2cc/test box measurements and perform automatic or manual target matching. **For additional details on programming and fitting Phonak hearing aids, please refer to the Phonak Target Fitting Guide.**

Requirements

Phonak Target version	Phonak Target 6.1 or higher
NOAH version	Noah 4.4 Build 2280 or higher
Otometrics Otosuite version	Otosuite 4.83.00 or higher
Equipment	Otometrics AURICAL FreeFit and AURICAL HIT test box

Visit www.otometrics.com/aurical for more information on AURICAL from Otometrics.

1. Connecting the hearing aids

Select the fitting device you wish to use to program the hearing aids **[NOAHlink]** / **[iCube II]** / **[HI-PRO]** / **[Noahlink Wireless]** via the drop down menu located centrally at the top of the main screen.

It is recommended to use iCube II or Noahlink Wireless for TargetMatch.

Please use fresh batteries in the hearing aids when using a wireless fitting device.

Click **[Connect]** to establish the connection to the hearing aids.



Once the hearing aids are connected, the **[Acoustic parameters]** screen will automatically pop up.

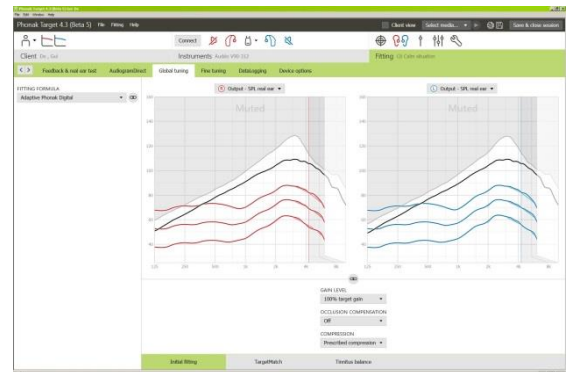
Note: Please verify or change the coupling options as needed to ensure the appropriate fitting parameters are applied

2. Fitting formula

In the screen **[Global tuning]**, the desired fitting formula can be selected.

TargetMatch will apply the appropriate parameters and real ear targets based on this selection.

Global tuning can be accessed via **[Fitting]** > **[Global tuning]**.

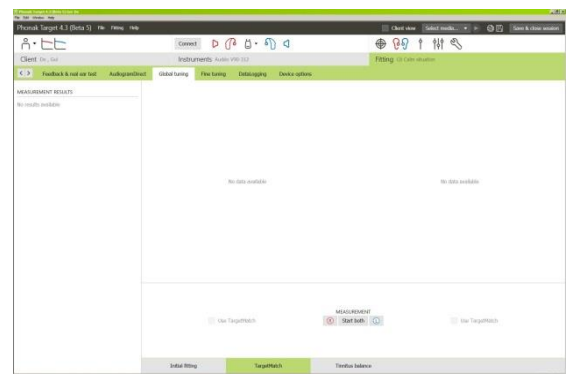


3. TargetMatch

TargetMatch can be accessed via **[Global tuning]** > **[TargetMatch]**.

Click **[R]** / **[Start both]** / **[L]** to start TargetMatch. The assistant will then guide you through a series of steps.

It is recommended to run the **[Feedback & real ear test]** before testing with TargetMatch.



4. Preparation – select method

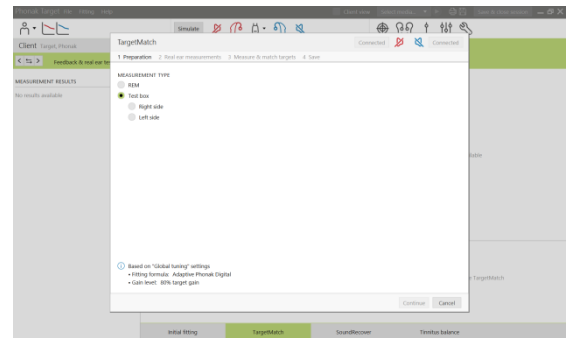
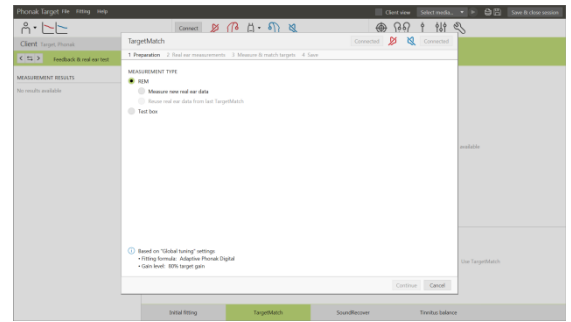
Select whether you wish to perform measurements via **[REM]** or **[Test box]**

For REM measurements,

- Select **[Measure new real ear data]**. The software will guide you through the steps to calibrate, place the probe tube, and perform REUG, REOG, RECD measurements and microphone check/MLE.

For 2cc/test box measurements,

- Select **[Test box]** to perform measurements and target matching directly in the 2cc/test box. Previously measured RECDs or average, age-dependent RECDs available in the fitting session will be applied. Please refer to *Section 8. Measure & match targets* to continue directly with 2cc/test box verification.

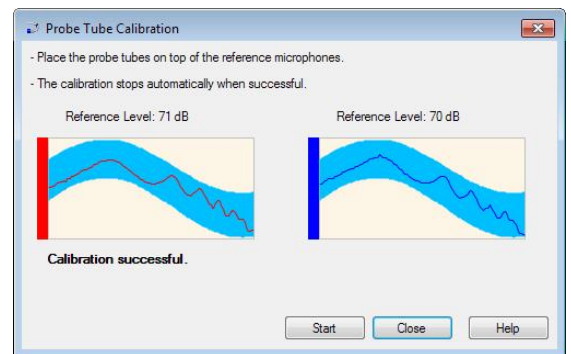


5. Preparation – probe tube calibration

Follow the instructions to calibrate the probe tubes.

Note: If the calibration curves are jagged instead of smooth as shown in the picture, please make sure that the probe tubes aren't touching other objects and repeat the calibration.

Click **[Close]** to proceed.



6. Probe tube placement and REUG measurement

Guided probe tube placement is a function that assists you with placing the probe tube at the correct insertion depth. It is available for clients age 10 years and above.

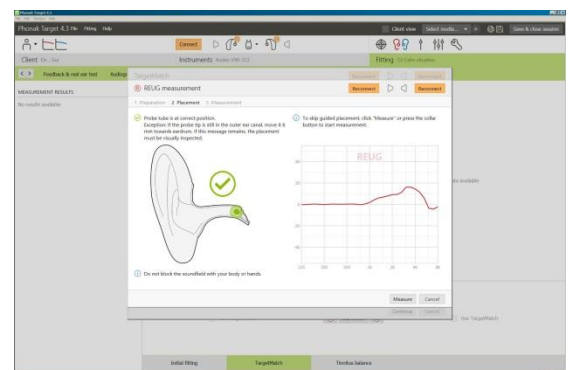
Click **[R Start]** / **[L Start]** to enter the REUG measurement with guided probe tube placement.

Once the probe tube is placed at the ear opening, click **[Start]** or press the **[Power Button]** on the AURICAL FreeFit to start the guided probe tube placement.

Carefully move the probe tube towards the eardrum as indicated. The values are presented in millimeters and match the scale on the probe tubes provided by Otometrics.

The green check mark indicates when the probe tube is at the correct position.

Click **[Measure]** or press the **[Power Button]** on the AURICAL FreeFit to start the REUG measurement.

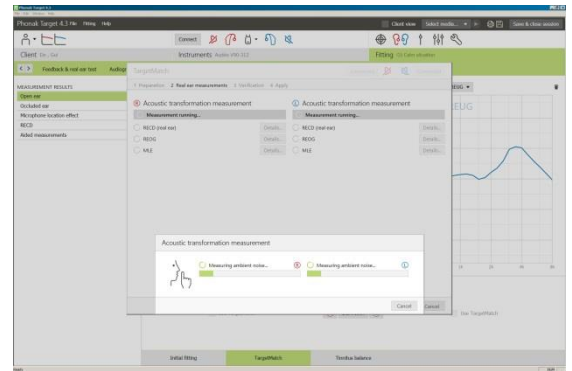


7. Real ear measurements: RECD, REOG, and Microphone check/MLE

Insert the hearing aids into the clients ears and **[Reconnect]** the hearing aids.

Note: Please make sure that the probe tube position doesn't change while inserting the hearing aids.

Click on **[Start measurement]** to automatically measure the RECD, REOG, and perform the Microphone check/MLE.



8. Measure & match targets

Select the program that will be active during verification and how you wish to perform verification.

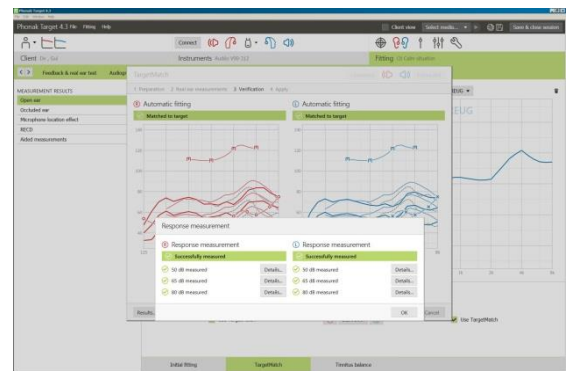
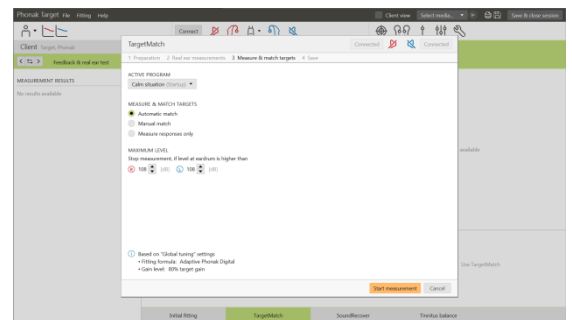
Select **[Automatic match]** to automatically apply acoustic information (i.e. REUG, REOG, RECD), run response measurements, and adjust the hearing aid output to match targets.

(Optional)

- Select **[Manual match]** to manually adjust hearing aid responses to match targets.
- Select **[Measure responses only]** to measure hearing aid responses only.

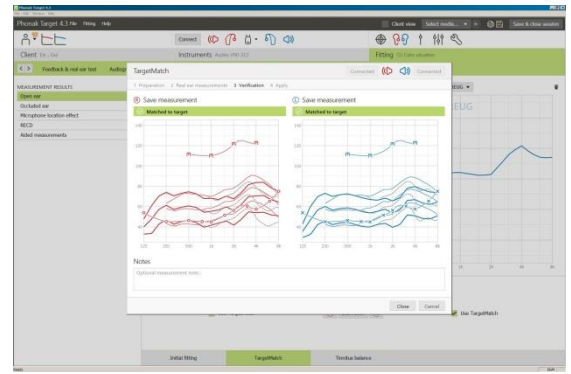
Note: For 2cc/test box measures, you will be reminded to place the hearing aids into the test box.

Click on **[Start measurement]** to obtain the hearing aid responses.



9. Finishing TargetMatch

Click **[Save]** to apply the changes to the fitting and store all measurements to Noah. The results can be reviewed afterwards either in Otometrics' Otosuite or Phonak Target.



10. Information and description of symbols and System requirements

Information and the description of symbols and an overview of system requirements can be found in the Phonak Target Fitting Guide.

CE mark applied 2020



Manufacturer:
Sonova AG
Laubisrütistrasse 28
CH-8712 Staefa