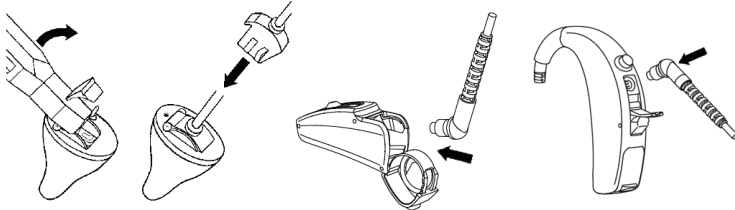


# Phonak Target™ 1.2

## Desktop Fitting Guide

To prepare the hearing instruments for the fitting session.



### iCube

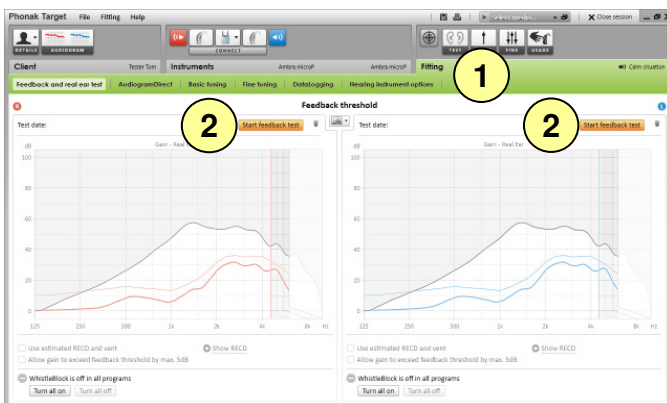
Insert the battery and turn the hearing instrument on by closing the battery compartment.

### NOAHlink or HI-PRO

Connect the programming cables to the hearing instruments and to the fitting device.



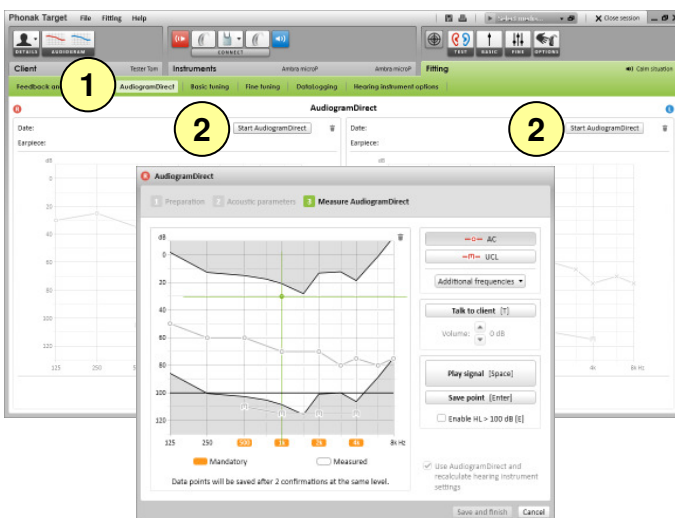
Confirm that the correct fitting device is shown. To change the fitting device, use the pull down menu. Click **[CONNECT]** to start the fitting. The connected instruments will appear.



1. Click on the tab **[Fitting]**.
2. In the screen **[Feedback and real ear test]** click **[Start test]** to run the test.

To use the test results to calculate the predicted RECD and the acoustic parameter settings, select the check box **[Use predicted RECD and vent]**.

It is recommended to run the Feedback and real ear test before testing with AudiogramDirect.



1. Click **[AudiogramDirect]** to test the hearing threshold and the UCL using the connected hearing instruments.
2. Click **[Start AudiogramDirect]** and follow the instructions.



1. Go to **[Basic tuning]** if adjustments to **[Gain level]**, **[Occlusion compensation]**, **[BassBoost]** or **[Compression setting]** are required.

The gain level and compression settings are based on the client's usage experience and fitting formula.

2. Click **[Close session]** to save the settings to the hearing instruments and the data base.

## Useful Information to program accessories



Phonak Target™ identifies connected accessories automatically; just plug them in during the fitting session.

Always remove the battery before plugging in the USB cable.

The identified accessories are shown in the dashboard next to the connected hearing instruments.

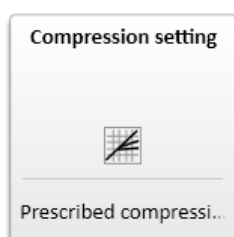
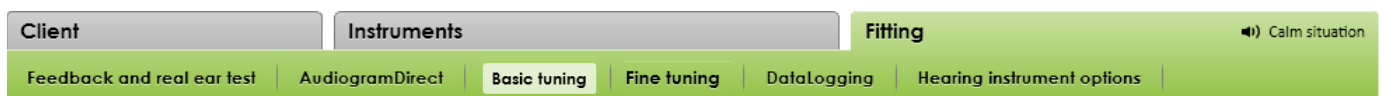
Accessories can also be manually selected in the tab **[Instruments] > [Accessories]**.

During the save procedure the accessories are listed in the save dialog.



## Tips and Tricks

The basic tuning section of Phonak Target™ offers fundamental tools for successful fitting. New to Phonak Target™ version 1.2 is a compression setting tool which can be used to accomplish global changes to compression characteristics. To access this tool, click the tab **[Fitting] > [Basic tuning]** and select **[Compression setting]**.

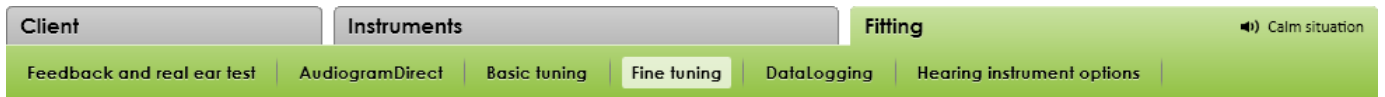


Phonak Target™ selects overall compression settings based on the client's usage experience and the selected fitting formula.

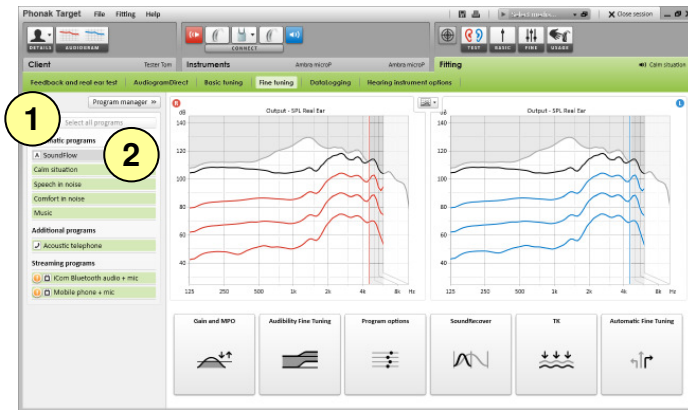
Prescribed compression is selected unless a client is a long term user of linear signal processing, in which case **[Semi-linear]** is selected. This option makes compression settings more linear than the selected fitting formula recommends to help facilitate the transition from linear signal processing.

You can also manually select **[Linear]**. This option maintains the targets from the selected fitting formula while making all compression settings as linear as possible.

The fine tuning section of Phonak Target™ includes the full choice of tuning tools to accomplish the client needs in a fast and precise manner. Click the tab **[Fitting]** > **[Fine tuning]** to access the following fitting tools.



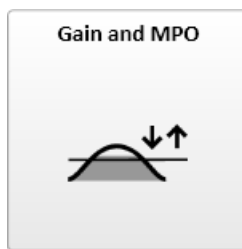
Each program of the program structure can be fine-tuned, including the streaming programs for each wireless use case.



Select the program to adjust.

1. Click **[Select all programs]** to adjust all programs together.
2. Click **[SoundFlow]** to modify only the programs of the automatic.

Click only on one program, e.g. Calm situation, in the list to adjust this program only.



Select gain values with the cursor to adjust them. The gain values are adjustable for soft (G40), moderate (G60) and loud (G80) input sounds.

The optimum fitting range is available if the individual UCL values were entered in the client's audiogram.

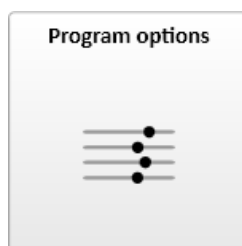
To modify the MPO in all channels together, click **[MPO]** shown on the left beside the MPO values. The overall gain can be changed by clicking **[Gain]**.

The compression ratio of each channel is shown in the row directly underneath the gain values.



Selectable sound samples and the related gain are shown in the curve display. The sound samples can be played to simulate a specific listening environment.

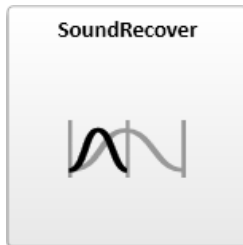
Adjustments affect only gain levels and frequencies which are relevant to enhance the audibility of the selected stimuli.



Now sound cleaning features can be fine-tuned individually as and when necessary. The current settings are positioned on scales numbered between 0 and 20 and the available ranges within each scale are visible.

A fully customizable program is available by clicking: **[Program manager]** > **[Add new program]** > **[Custom program]**.

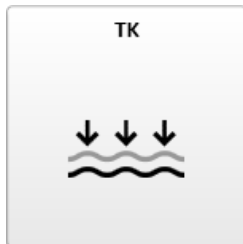
The sound cleaning adjustments made with FlexControl will be shown in the follow up sessions, if logged data is available.



The individual SoundRecover settings, set by the pre-calculation, can be fine-tuned.

For binaural fittings the cut-off frequency and the frequency compression are calculated in relation to the ear with the lesser hearing loss. Please check the SoundRecover settings if incompatible hearing instruments are to be fitted together in one binaural fitting session.

The amount of frequency compression can be increased or decreased as desired to improve speech intelligibility and audibility.



The amplification of very soft (G20) input sounds can be adjusted with the [TK] tuning tool. An increase of gain for very soft input sounds lowers the threshold knee point (TK) and vice versa.

Select the values with the cursor to adjust them. Underneath the gain values the TK values are shown for each channel.

The gain / output curve for very soft input sounds is shown in the curve display.

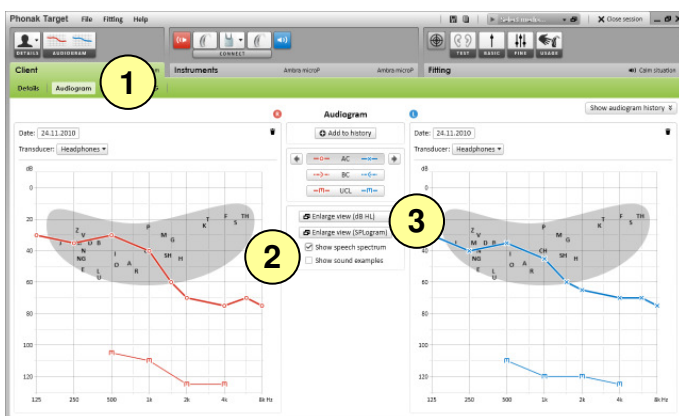


[Automatic Fine Tuning] is a situation based fine tuning tool. The available adjustments are dependant on the client's evaluation of the sound situation.

The fine tuning steps are clearly displayed before the action will be applied by the hearing care professional. Depending on the selected program a recommended sound sample is pre-selected.

The sound samples can be played to simulate the listening environment.

## Useful Information to use the speech spectrum



1. Click on the tab [Client] > [Audiogram].
2. Select [Show speech spectrum] in the audiogram section to display the client's hearing loss within the speech spectrum.
3. Click [Enlarge view] to share the simplified audiogram display with the client and significant others.

To instantly print the displayed view during client counseling click on the print icon in the upper right corner of the enlarged view.