

Phonak Target 6.0

November 2018

Verification Fitting Guide

This guide summarizes the few steps to follow to accomplish fast and accurate verification. Test systems are not always consistent with the types of stimuli available and how the output results are displayed. The wide variety of signal processing schemes, gain and compression variables, frequency lowering, and noise management algorithms in hearing aids also impact the verification of the gain and MPO settings. As a result, the displayed output results may not always be an accurate representation of true function leading to misinterpretation and/or unnecessary fine tuning. To address these challenges, Phonak Target introduces a helpful verification assistant to simplify and streamline the verification process. **For additional details on programming and fitting Phonak hearing aids, please refer to the Phonak Target Fitting Guide.**

Content

Preparation.....	2
Connecting the hearing aids.....	2
RECD.....	2
Fitting formula.....	2
Verification assistant.....	3
Finishing the fitting session.....	4
Information and description of symbols and System Requirements.....	4

Preparation

Enter **[Client & sessions]** and enter client information if not already available. To prepare the hearing aids for verification, connect the hearing aids using your preferred fitting interface.

➔ **The verification assistant is only accessible when hearing aids are connected**

Connecting the hearing aids

Select how you wish to program the hearing aids **[NOAHlink]** / **[iCube]** / **[iCube II]** / **[HI-PRO]** / **[Noahlink Wireless]** via the drop down menu located centrally at the top of the main screen.

Please use fresh batteries in the hearing aids when using a wireless fitting device. Click **[Connect]** to establish the connection to the hearing aids.



Once hearing aids are connected, the **[Acoustic parameters]** screen will automatically pop up. Please verify or change the coupling options as needed so they correspond to the fitting.

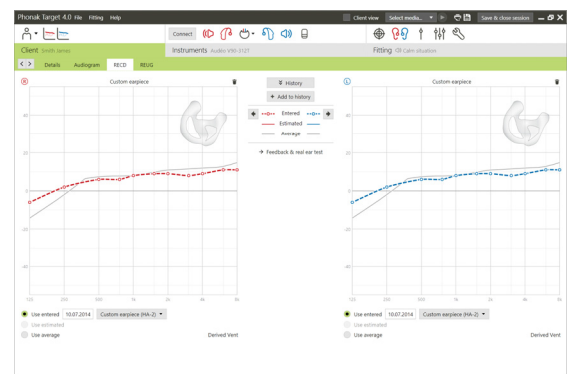
RECD

RECD values can be accessed via **[Client]** then **[RECD]**. Different RECD values can be used in Phonak Target:

[Use entered] these are the measured RECD values entered from verification equipment. To enter an RECD measured on an external verification device, manually click on the graph or import it from NOAH by clicking **[RECD history]**.

[Use estimated] this is an estimated RECD based upon the characteristics on an adult ear and the results of the feedback test.

[Use average] these are the average earmold RECD values based upon the age of the individual and algorithm (i.e. DSLv5 or NAL-NL2) used.

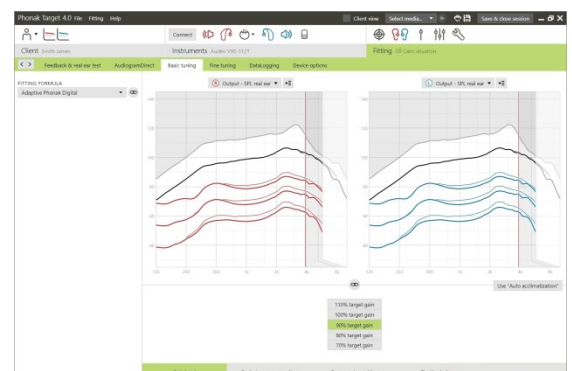


Fitting formula

When fitting a child, Junior mode will be automatically selected with DSL v5 Pediatric as the default fitting formula.

In the screen **[Basic tuning]**, the desired fitting formula can be selected.

Basic tuning can be accessed via **[Fitting]** and then **[Basic tuning]**.

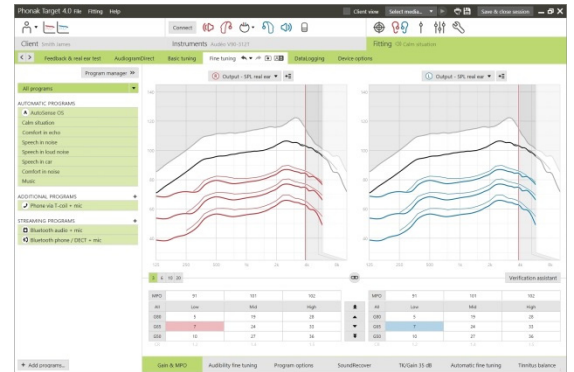


Verification assistant

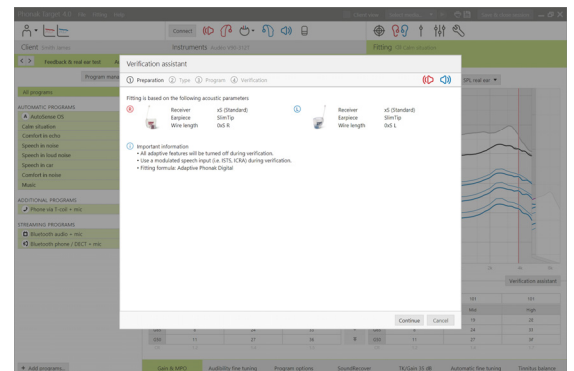
➔ Verification assistant is available as a default when using Junior Mode or when enabled in Phonak Target setup.

The Verification assistant can be accessed via [Fine tuning], [Gain & MPO] and then clicking on [Verification assistant].

The assistant will then guide you through a series of steps.

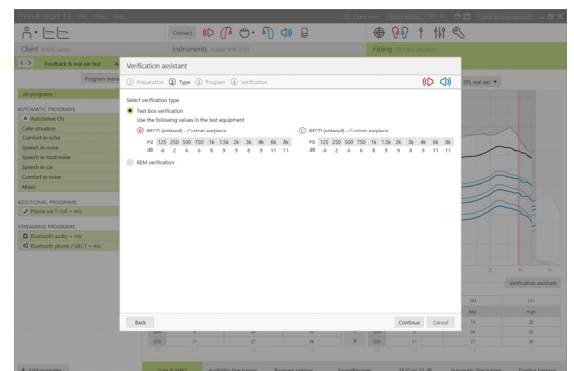


Step 1 [Preparation]: This step starts with confirming the acoustic parameters and coupling being applied to the fitting.

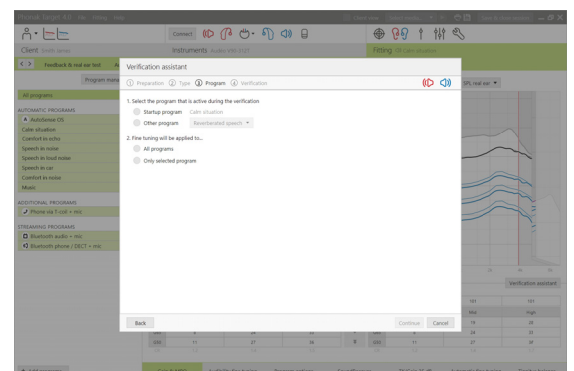


Step 2 [Type]: The next step will determine whether Testbox or REM verification will be performed. If Testbox is chosen, the RECDs being applied to the fitting will be highlighted. For REM, there are some helpful hints listed.

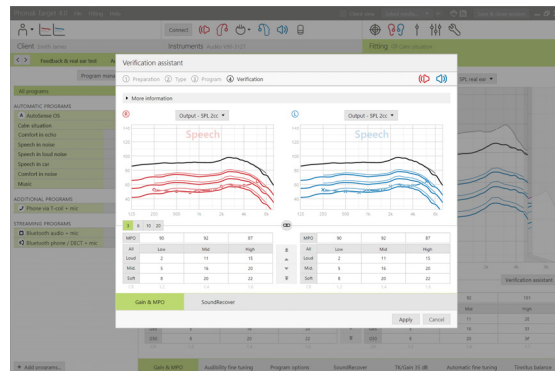
Note: it is recommended for Testbox verification that the RECD values are confirmed and match your verification equipment.



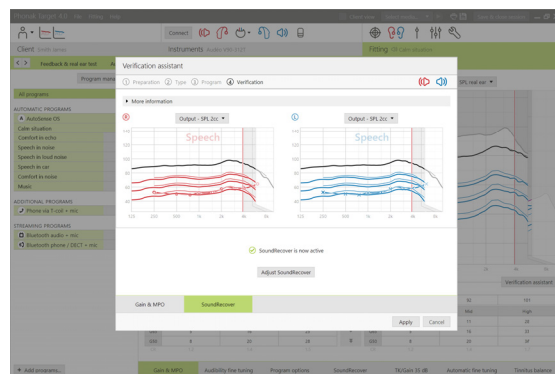
Step 3 [Program]: Choose the program that will be active during verification and indicate whether the adjustments will be applied to the active program or to all programs.



Step 4 **[Verification]**: This step will deactivate all adaptive features of the hearing aids and allow for adjustment of gain and MPO. The available curve displays correlate with the type of verification being performed. Test Box will show either a 2cc output or 2cc Gain curves while Real Ear will show insertion gain or Real Ear SPL output curves.



To enable SoundRecover go to the **[SoundRecover]** tab on the lower part of the window. To change the settings click on **[Adjust SoundRecover]**. All adjustments will be applied to current session.



When a hearing aid is muted or unmuted, a watermark can be seen above the curve display (i.e. Muted or Speech). The speech watermark serves as a reminder of the recommended input signal to optimize target matching.

Click **[Apply]** to confirm any adjustments made and return to the standard fitting mode. SoundRecover will be reactivated at default. If there is a need to discard any adjustments made during verification, click **[Cancel]**.

Finishing the fitting session

You can close the session at any time by clicking **[Save & Close session]** in the top right corner of the screen. The save dialog will confirm the successful save of the hearing aids. After the save, Phonak Target will guide you to the start screen.

Information and description of symbols and System Requirements

Information and the description of symbols and an overview of system requirements can be found in the Phonak Target Fitting Guide.

CE mark applied 2018



Manufacturer:
Sonova AG
Laubisruetistrasse 28
CH-8712 Staefa
Switzerland

